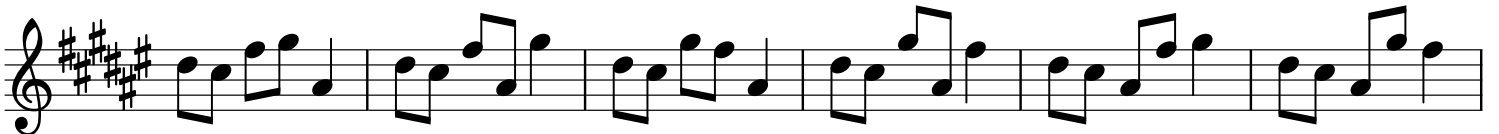
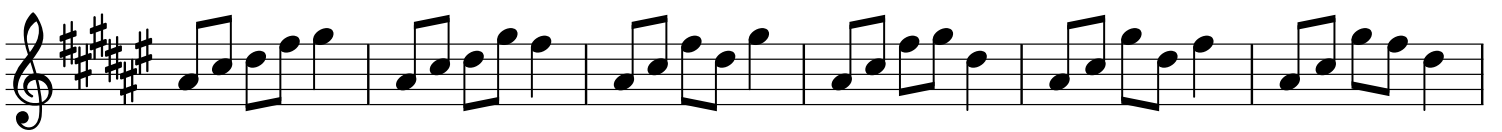


# minor Penta

1-b3-4-5-b7 Var.2





The image displays four staves of musical notation, each containing six measures of music. The notation is written in treble clef with a key signature of one sharp (F#) and a time signature of 4/4. The notes are primarily eighth and quarter notes, often beamed together in pairs. The melody progresses through a series of intervals, including eighth-note pairs and quarter notes, creating a rhythmic and melodic pattern across the four staves.