

Major Penta Tonic

31256 Var.4

31256



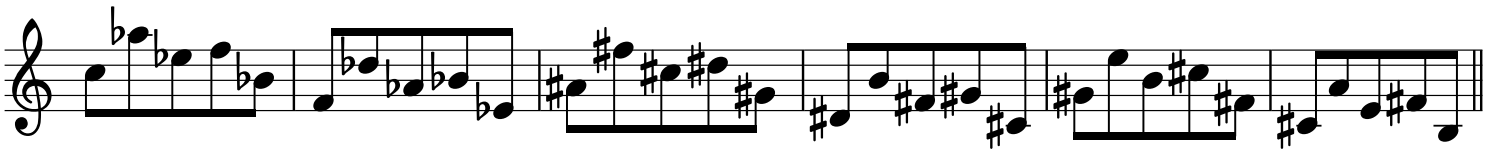
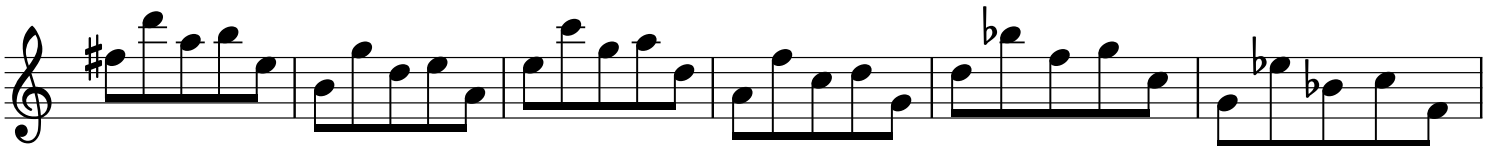
31265



31526



31562



31625



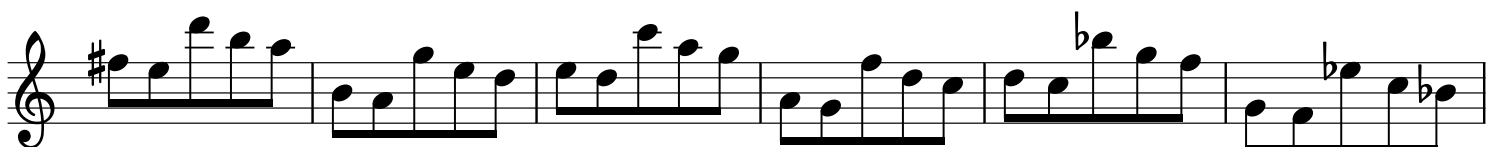
31652



32156



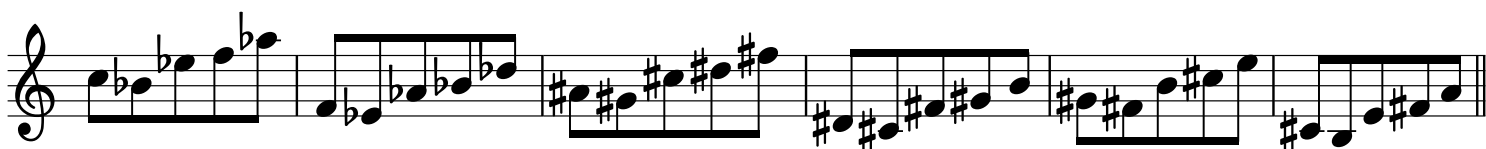
32165



32516



32561



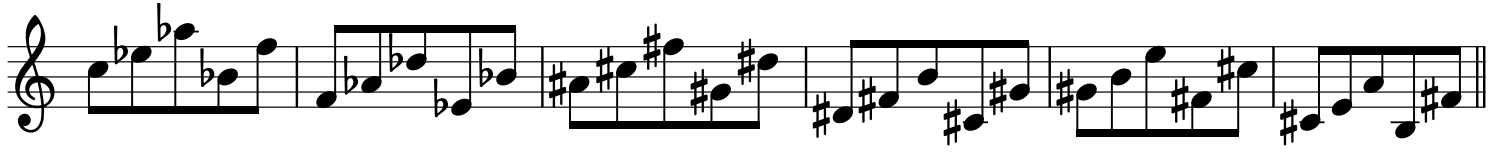
32615



32651



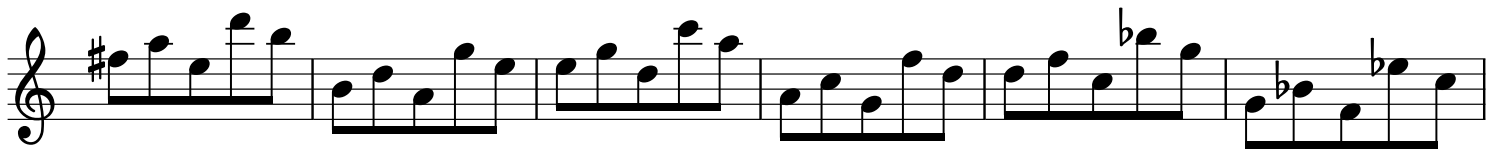
35126



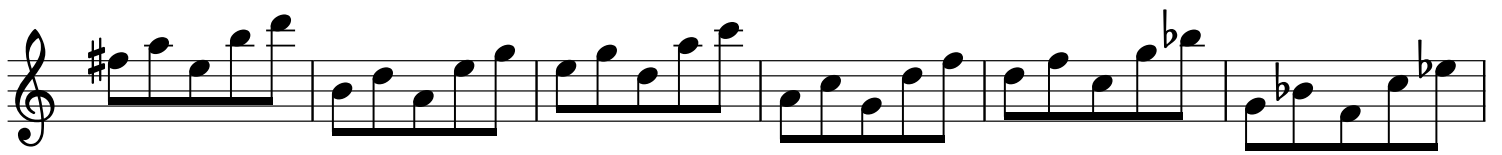
35162



35216



35261



35612



35621



36125



36152



36215

Two staves of musical notation for exercise 36215. The first staff contains six measures of music, and the second staff contains six measures. The key signature is one sharp (F#). The notation includes various rhythmic patterns and accidentals such as flats and naturals.

36251

Two staves of musical notation for exercise 36251. The first staff contains six measures of music, and the second staff contains six measures. The key signature is one sharp (F#). The notation includes various rhythmic patterns and accidentals such as flats and naturals.

36512

Two staves of musical notation for exercise 36512. The first staff contains six measures of music, and the second staff contains six measures. The key signature is one sharp (F#). The notation includes various rhythmic patterns and accidentals such as flats and naturals.

36521

Two staves of musical notation for exercise 36521. The first staff contains six measures of music, and the second staff contains six measures. The key signature is one sharp (F#). The notation includes various rhythmic patterns and accidentals such as flats and naturals.