

# Major Penta Tonic

12356 Var.4

minor 3rd Up

12356

Musical notation for exercise 12356, consisting of two staves. The first staff contains six measures of music, and the second staff contains six measures. The key signature has one flat (B-flat), and the time signature is 4/4. The melody consists of eighth notes and quarter notes.

12365

Musical notation for exercise 12365, consisting of two staves. The first staff contains six measures of music, and the second staff contains six measures. The key signature has one flat (B-flat), and the time signature is 4/4. The melody consists of eighth notes and quarter notes.

12536

Musical notation for exercise 12536, consisting of two staves. The first staff contains six measures of music, and the second staff contains six measures. The key signature has one flat (B-flat), and the time signature is 4/4. The melody consists of eighth notes and quarter notes.

12563

Musical notation for exercise 12563, consisting of two staves. The first staff contains six measures of music, and the second staff contains six measures. The key signature has one flat (B-flat), and the time signature is 4/4. The melody consists of eighth notes and quarter notes.

12635

Musical notation for exercise 12635, consisting of two staves. The first staff contains six measures of music, and the second staff contains six measures. The key signature has one flat (B-flat), and the time signature is 4/4. The melody consists of eighth notes and quarter notes.

12653

Musical notation for exercise 12653, consisting of two staves. The first staff contains six measures of music, and the second staff contains six measures. The key signature has one flat (B-flat), and the time signature is 4/4. The melody consists of eighth notes and quarter notes.

13256

Exercise 13256 consists of two staves of music. The first staff begins with a treble clef, a key signature of one flat (B-flat), and a common time signature. The melody consists of six measures: 1) B-flat, A, G, F, E, D; 2) C, B, A, G, F, E; 3) D, C, B, A, G, F; 4) E, D, C, B, A, G; 5) F, E, D, C, B, A; 6) G, F, E, D, C, B. The second staff continues the exercise with six more measures: 1) B-flat, A, G, F, E, D; 2) C, B, A, G, F, E; 3) D, C, B, A, G, F; 4) E, D, C, B, A, G; 5) F, E, D, C, B, A; 6) G, F, E, D, C, B.

13265

Exercise 13265 consists of two staves of music. The first staff begins with a treble clef, a key signature of one flat (B-flat), and a common time signature. The melody consists of six measures: 1) B-flat, A, G, F, E, D; 2) C, B, A, G, F, E; 3) D, C, B, A, G, F; 4) E, D, C, B, A, G; 5) F, E, D, C, B, A; 6) G, F, E, D, C, B. The second staff continues the exercise with six more measures: 1) B-flat, A, G, F, E, D; 2) C, B, A, G, F, E; 3) D, C, B, A, G, F; 4) E, D, C, B, A, G; 5) F, E, D, C, B, A; 6) G, F, E, D, C, B.

13526

Exercise 13526 consists of two staves of music. The first staff begins with a treble clef, a key signature of one flat (B-flat), and a common time signature. The melody consists of six measures: 1) B-flat, A, G, F, E, D; 2) C, B, A, G, F, E; 3) D, C, B, A, G, F; 4) E, D, C, B, A, G; 5) F, E, D, C, B, A; 6) G, F, E, D, C, B. The second staff continues the exercise with six more measures: 1) B-flat, A, G, F, E, D; 2) C, B, A, G, F, E; 3) D, C, B, A, G, F; 4) E, D, C, B, A, G; 5) F, E, D, C, B, A; 6) G, F, E, D, C, B.

13562

Exercise 13562 consists of two staves of music. The first staff begins with a treble clef, a key signature of one flat (B-flat), and a common time signature. The melody consists of six measures: 1) B-flat, A, G, F, E, D; 2) C, B, A, G, F, E; 3) D, C, B, A, G, F; 4) E, D, C, B, A, G; 5) F, E, D, C, B, A; 6) G, F, E, D, C, B. The second staff continues the exercise with six more measures: 1) B-flat, A, G, F, E, D; 2) C, B, A, G, F, E; 3) D, C, B, A, G, F; 4) E, D, C, B, A, G; 5) F, E, D, C, B, A; 6) G, F, E, D, C, B.

13625

Exercise 13625 consists of two staves of music. The first staff begins with a treble clef, a key signature of one flat (B-flat), and a common time signature. The melody consists of six measures: 1) B-flat, A, G, F, E, D; 2) C, B, A, G, F, E; 3) D, C, B, A, G, F; 4) E, D, C, B, A, G; 5) F, E, D, C, B, A; 6) G, F, E, D, C, B. The second staff continues the exercise with six more measures: 1) B-flat, A, G, F, E, D; 2) C, B, A, G, F, E; 3) D, C, B, A, G, F; 4) E, D, C, B, A, G; 5) F, E, D, C, B, A; 6) G, F, E, D, C, B.

13652

Exercise 13652 consists of two staves of music. The first staff begins with a treble clef, a key signature of one flat (B-flat), and a common time signature. The melody consists of six measures: 1) B-flat, A, G, F, E, D; 2) C, B, A, G, F, E; 3) D, C, B, A, G, F; 4) E, D, C, B, A, G; 5) F, E, D, C, B, A; 6) G, F, E, D, C, B. The second staff continues the exercise with six more measures: 1) B-flat, A, G, F, E, D; 2) C, B, A, G, F, E; 3) D, C, B, A, G, F; 4) E, D, C, B, A, G; 5) F, E, D, C, B, A; 6) G, F, E, D, C, B.

15236



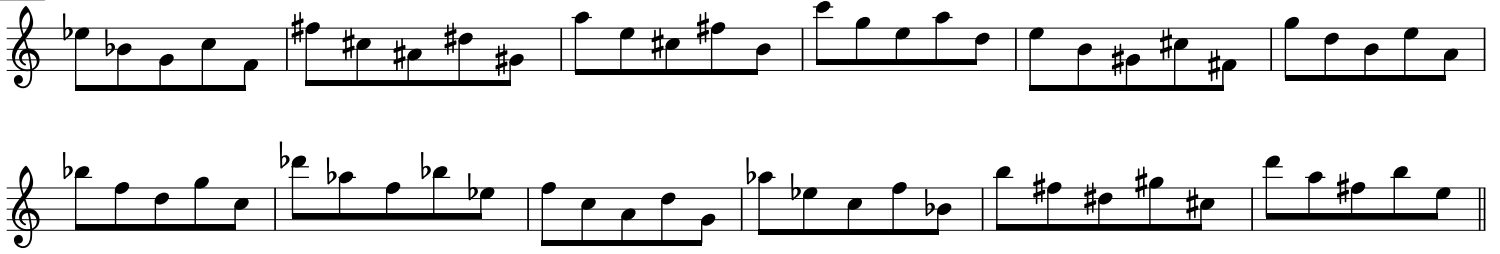
15263



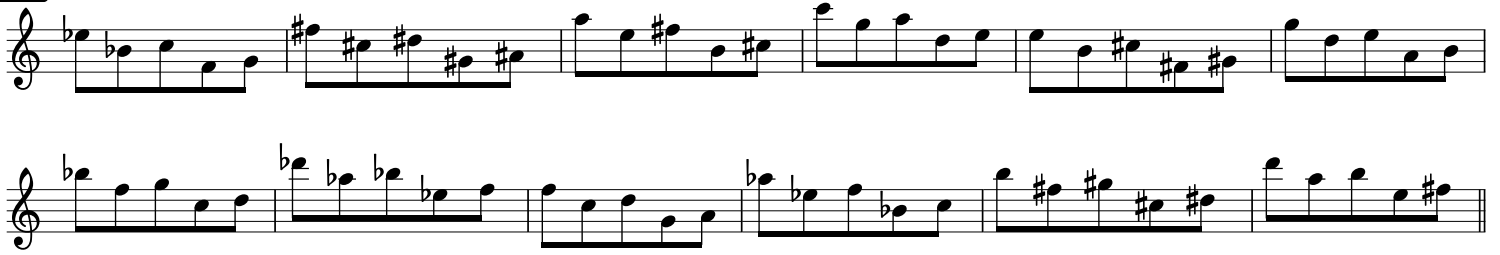
15326



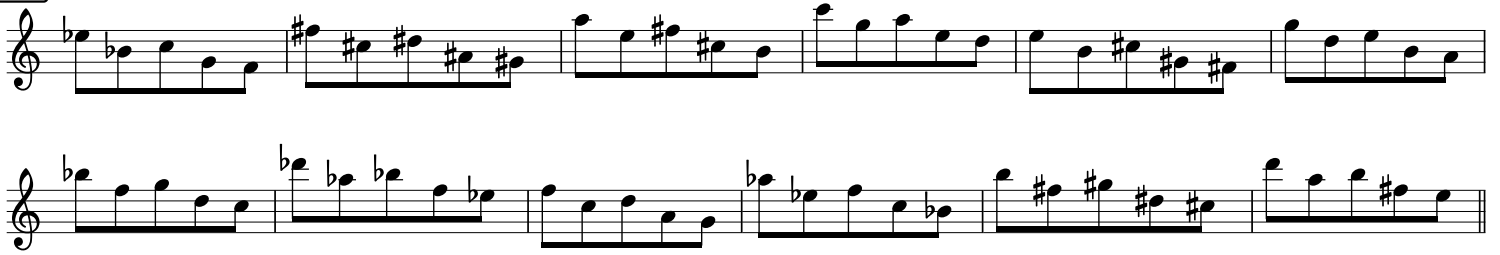
15362



15623



15632



16235

Two staves of musical notation for exercise 16235. The first staff contains six measures of music, and the second staff contains six measures. The notation includes various accidentals (sharps and flats) and rests.

16253

Two staves of musical notation for exercise 16253. The first staff contains six measures of music, and the second staff contains six measures. The notation includes various accidentals (sharps and flats) and rests.

16325

Two staves of musical notation for exercise 16325. The first staff contains six measures of music, and the second staff contains six measures. The notation includes various accidentals (sharps and flats) and rests.

16352

Two staves of musical notation for exercise 16352. The first staff contains six measures of music, and the second staff contains six measures. The notation includes various accidentals (sharps and flats) and rests.

16523

Two staves of musical notation for exercise 16523. The first staff contains six measures of music, and the second staff contains six measures. The notation includes various accidentals (sharps and flats) and rests.

16532

Two staves of musical notation for exercise 16532. The first staff contains six measures of music, and the second staff contains six measures. The notation includes various accidentals (sharps and flats) and rests.