

# Major Penta Tonic

21356 Var.3

Major 3rd Down

21356



21365



21536



21563



21635



21653



23156

Two staves of musical notation for exercise 23156. The first staff contains six measures of music, and the second staff contains six measures. The key signature has one sharp (F#) and the time signature is 4/4. The notes are: Staff 1: G4, A4, B4, C5, B4, A4, G4; D4, E4, F4, G4, A4, B4; C5, B4, A4, G4, F4, E4; D4, C4, B3, A3, G3, F3; E3, D3, C3, B2, A2, G2; F2, E2, D2, C2, B1, A1. Staff 2: G4, A4, B4, C5, B4, A4, G4; D4, E4, F4, G4, A4, B4; C5, B4, A4, G4, F4, E4; D4, C4, B3, A3, G3, F3; E3, D3, C3, B2, A2, G2; F2, E2, D2, C2, B1, A1.

23165

Two staves of musical notation for exercise 23165. The first staff contains six measures of music, and the second staff contains six measures. The key signature has one sharp (F#) and the time signature is 4/4. The notes are: Staff 1: G4, A4, B4, C5, B4, A4, G4; D4, E4, F4, G4, A4, B4; C5, B4, A4, G4, F4, E4; D4, C4, B3, A3, G3, F3; E3, D3, C3, B2, A2, G2; F2, E2, D2, C2, B1, A1. Staff 2: G4, A4, B4, C5, B4, A4, G4; D4, E4, F4, G4, A4, B4; C5, B4, A4, G4, F4, E4; D4, C4, B3, A3, G3, F3; E3, D3, C3, B2, A2, G2; F2, E2, D2, C2, B1, A1.

23516

Two staves of musical notation for exercise 23516. The first staff contains six measures of music, and the second staff contains six measures. The key signature has one sharp (F#) and the time signature is 4/4. The notes are: Staff 1: G4, A4, B4, C5, B4, A4, G4; D4, E4, F4, G4, A4, B4; C5, B4, A4, G4, F4, E4; D4, C4, B3, A3, G3, F3; E3, D3, C3, B2, A2, G2; F2, E2, D2, C2, B1, A1. Staff 2: G4, A4, B4, C5, B4, A4, G4; D4, E4, F4, G4, A4, B4; C5, B4, A4, G4, F4, E4; D4, C4, B3, A3, G3, F3; E3, D3, C3, B2, A2, G2; F2, E2, D2, C2, B1, A1.

23561

Two staves of musical notation for exercise 23561. The first staff contains six measures of music, and the second staff contains six measures. The key signature has one sharp (F#) and the time signature is 4/4. The notes are: Staff 1: G4, A4, B4, C5, B4, A4, G4; D4, E4, F4, G4, A4, B4; C5, B4, A4, G4, F4, E4; D4, C4, B3, A3, G3, F3; E3, D3, C3, B2, A2, G2; F2, E2, D2, C2, B1, A1. Staff 2: G4, A4, B4, C5, B4, A4, G4; D4, E4, F4, G4, A4, B4; C5, B4, A4, G4, F4, E4; D4, C4, B3, A3, G3, F3; E3, D3, C3, B2, A2, G2; F2, E2, D2, C2, B1, A1.

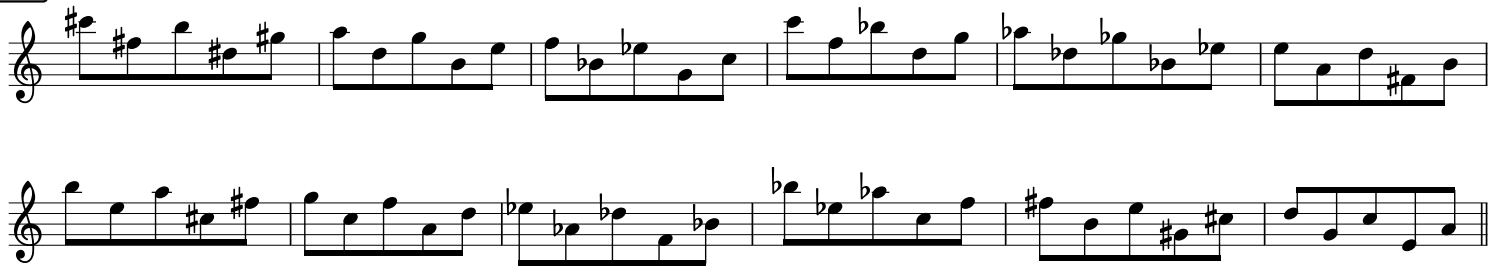
23615

Two staves of musical notation for exercise 23615. The first staff contains six measures of music, and the second staff contains six measures. The key signature has one sharp (F#) and the time signature is 4/4. The notes are: Staff 1: G4, A4, B4, C5, B4, A4, G4; D4, E4, F4, G4, A4, B4; C5, B4, A4, G4, F4, E4; D4, C4, B3, A3, G3, F3; E3, D3, C3, B2, A2, G2; F2, E2, D2, C2, B1, A1. Staff 2: G4, A4, B4, C5, B4, A4, G4; D4, E4, F4, G4, A4, B4; C5, B4, A4, G4, F4, E4; D4, C4, B3, A3, G3, F3; E3, D3, C3, B2, A2, G2; F2, E2, D2, C2, B1, A1.

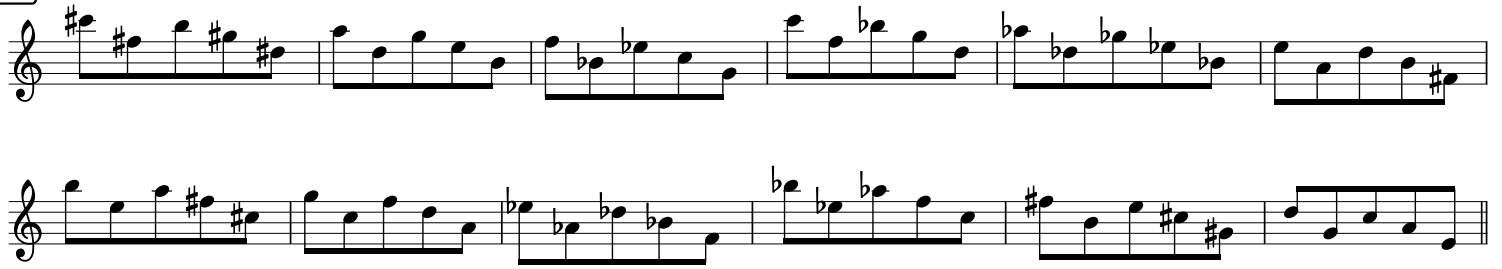
23651

Two staves of musical notation for exercise 23651. The first staff contains six measures of music, and the second staff contains six measures. The key signature has one sharp (F#) and the time signature is 4/4. The notes are: Staff 1: G4, A4, B4, C5, B4, A4, G4; D4, E4, F4, G4, A4, B4; C5, B4, A4, G4, F4, E4; D4, C4, B3, A3, G3, F3; E3, D3, C3, B2, A2, G2; F2, E2, D2, C2, B1, A1. Staff 2: G4, A4, B4, C5, B4, A4, G4; D4, E4, F4, G4, A4, B4; C5, B4, A4, G4, F4, E4; D4, C4, B3, A3, G3, F3; E3, D3, C3, B2, A2, G2; F2, E2, D2, C2, B1, A1.

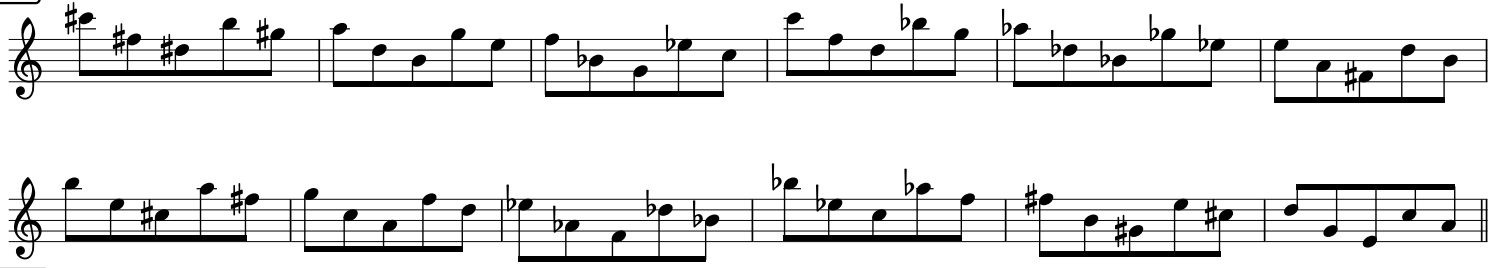
**25136**



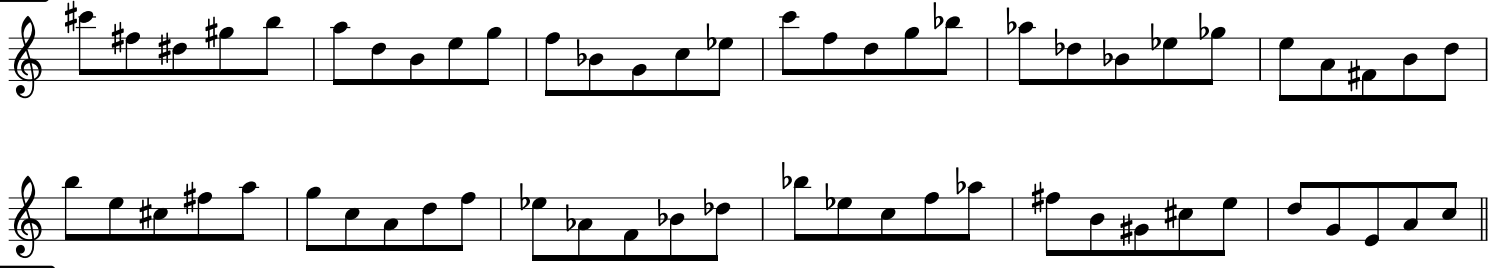
**25163**



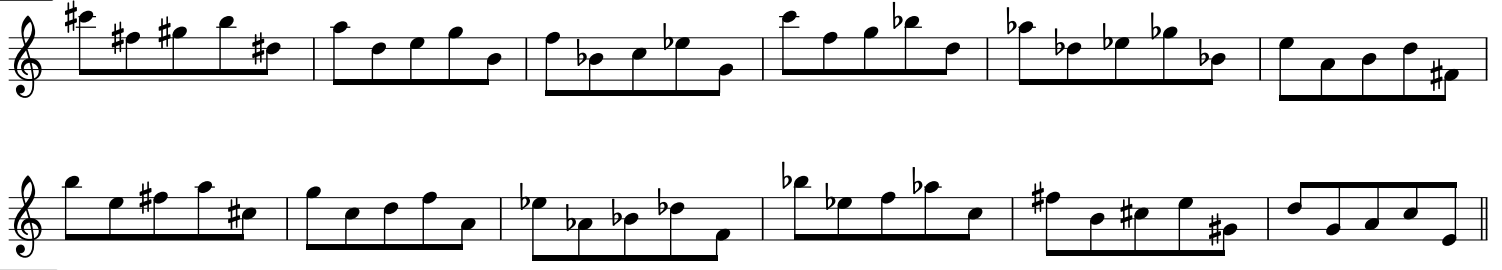
**25316**



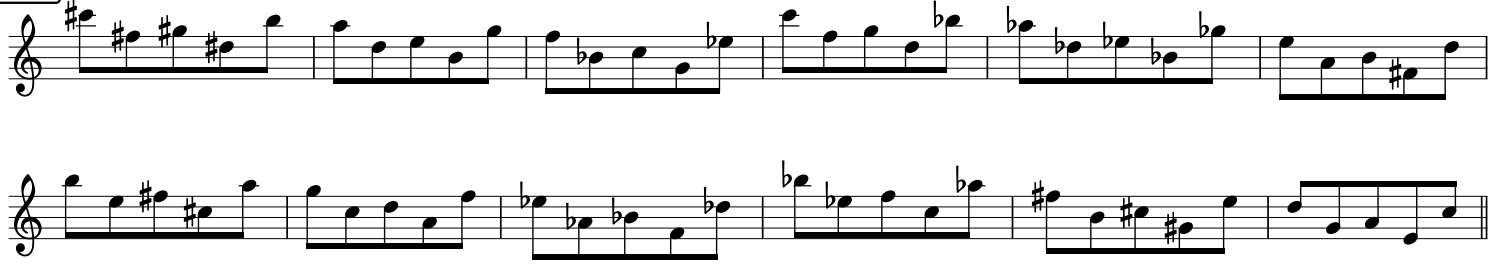
**25361**



**25613**



**25631**



26135

Two staves of musical notation for exercise 26135. The first staff contains six measures of music, and the second staff contains six measures. The notation includes various accidentals (sharps, flats, naturals) and rests.

26153

Two staves of musical notation for exercise 26153. The first staff contains six measures of music, and the second staff contains six measures. The notation includes various accidentals (sharps, flats, naturals) and rests.

26315

Two staves of musical notation for exercise 26315. The first staff contains six measures of music, and the second staff contains six measures. The notation includes various accidentals (sharps, flats, naturals) and rests.

26351

Two staves of musical notation for exercise 26351. The first staff contains six measures of music, and the second staff contains six measures. The notation includes various accidentals (sharps, flats, naturals) and rests.

26513

Two staves of musical notation for exercise 26513. The first staff contains six measures of music, and the second staff contains six measures. The notation includes various accidentals (sharps, flats, naturals) and rests.

26531

Two staves of musical notation for exercise 26531. The first staff contains six measures of music, and the second staff contains six measures. The notation includes various accidentals (sharps, flats, naturals) and rests.