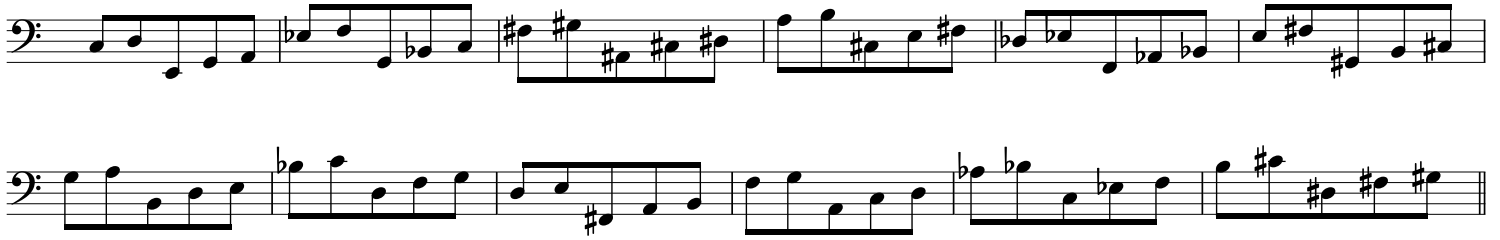


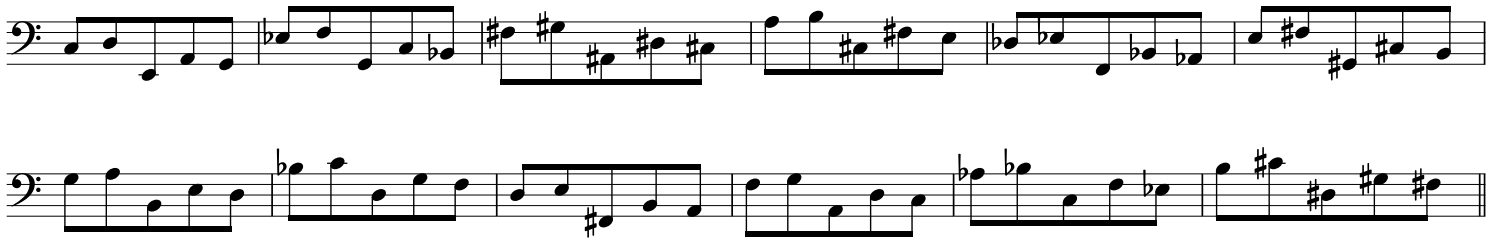
# Major Penta Tonic

12356 Var.3  
minor 3rd Up

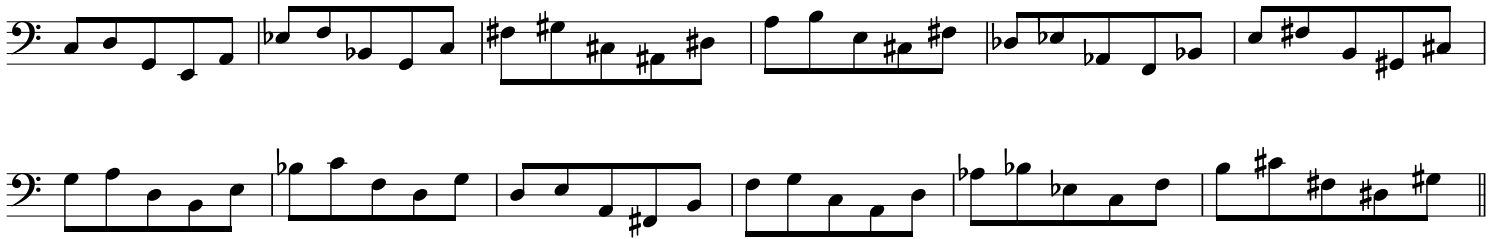
12356



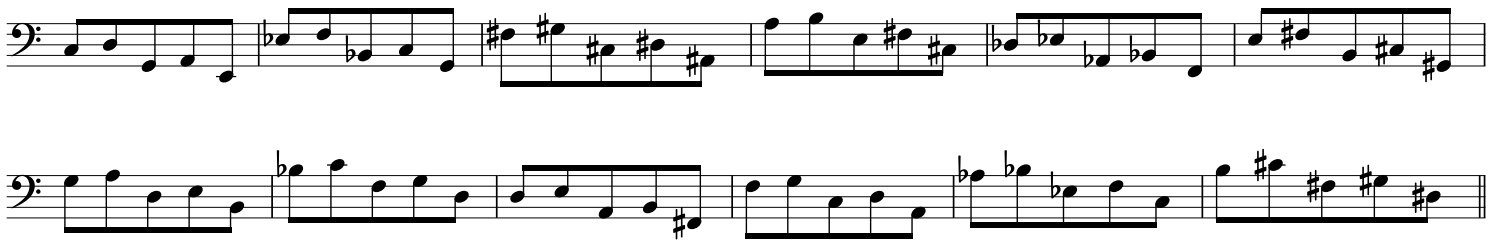
12365



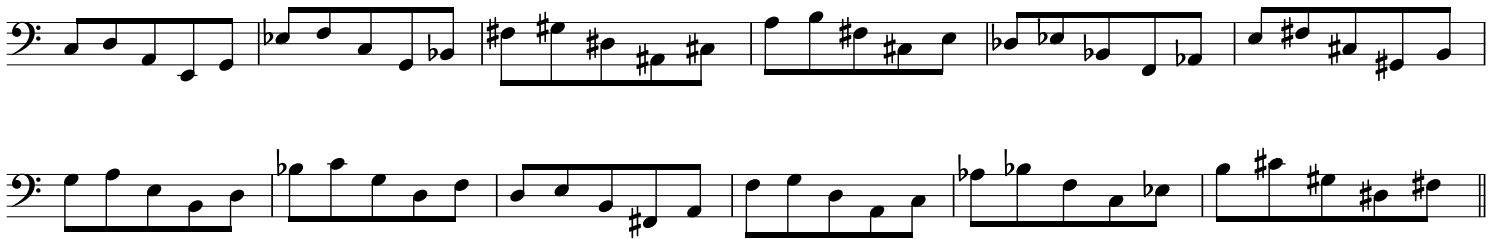
12536



12563



12635



12653



13256

Two staves of musical notation for exercise 13256. The first staff contains six measures of music, and the second staff contains six measures. The notation includes various accidentals (sharps, flats, naturals) and rests.

13265

Two staves of musical notation for exercise 13265. The first staff contains six measures of music, and the second staff contains six measures. The notation includes various accidentals and rests.

13526

Two staves of musical notation for exercise 13526. The first staff contains six measures of music, and the second staff contains six measures. The notation includes various accidentals and rests.

13562

Two staves of musical notation for exercise 13562. The first staff contains six measures of music, and the second staff contains six measures. The notation includes various accidentals and rests.

13625

Two staves of musical notation for exercise 13625. The first staff contains six measures of music, and the second staff contains six measures. The notation includes various accidentals and rests.

13652

Two staves of musical notation for exercise 13652. The first staff contains six measures of music, and the second staff contains six measures. The notation includes various accidentals and rests.

15236

Exercise 15236 consists of two staves of music. The first staff contains six measures of music, and the second staff contains six measures. The notation includes various rhythmic values and accidentals (sharps and flats).

15263

Exercise 15263 consists of two staves of music. The first staff contains six measures of music, and the second staff contains six measures. The notation includes various rhythmic values and accidentals (sharps and flats).

15326

Exercise 15326 consists of two staves of music. The first staff contains six measures of music, and the second staff contains six measures. The notation includes various rhythmic values and accidentals (sharps and flats).

15362

Exercise 15362 consists of two staves of music. The first staff contains six measures of music, and the second staff contains six measures. The notation includes various rhythmic values and accidentals (sharps and flats).

15623

Exercise 15623 consists of two staves of music. The first staff contains six measures of music, and the second staff contains six measures. The notation includes various rhythmic values and accidentals (sharps and flats).

15632

Exercise 15632 consists of two staves of music. The first staff contains six measures of music, and the second staff contains six measures. The notation includes various rhythmic values and accidentals (sharps and flats).

16235

Exercise 16235 consists of two staves of music. The first staff contains six measures of music, and the second staff contains six measures. The music is written in bass clef and features a sequence of notes with various accidentals (sharps, flats, and naturals) across the two staves.

16253

Exercise 16253 consists of two staves of music. The first staff contains six measures of music, and the second staff contains six measures. The music is written in bass clef and features a sequence of notes with various accidentals (sharps, flats, and naturals) across the two staves.

16325

Exercise 16325 consists of two staves of music. The first staff contains six measures of music, and the second staff contains six measures. The music is written in bass clef and features a sequence of notes with various accidentals (sharps, flats, and naturals) across the two staves.

16352

Exercise 16352 consists of two staves of music. The first staff contains six measures of music, and the second staff contains six measures. The music is written in bass clef and features a sequence of notes with various accidentals (sharps, flats, and naturals) across the two staves.

16523

Exercise 16523 consists of two staves of music. The first staff contains six measures of music, and the second staff contains six measures. The music is written in bass clef and features a sequence of notes with various accidentals (sharps, flats, and naturals) across the two staves.

16532

Exercise 16532 consists of two staves of music. The first staff contains six measures of music, and the second staff contains six measures. The music is written in bass clef and features a sequence of notes with various accidentals (sharps, flats, and naturals) across the two staves.