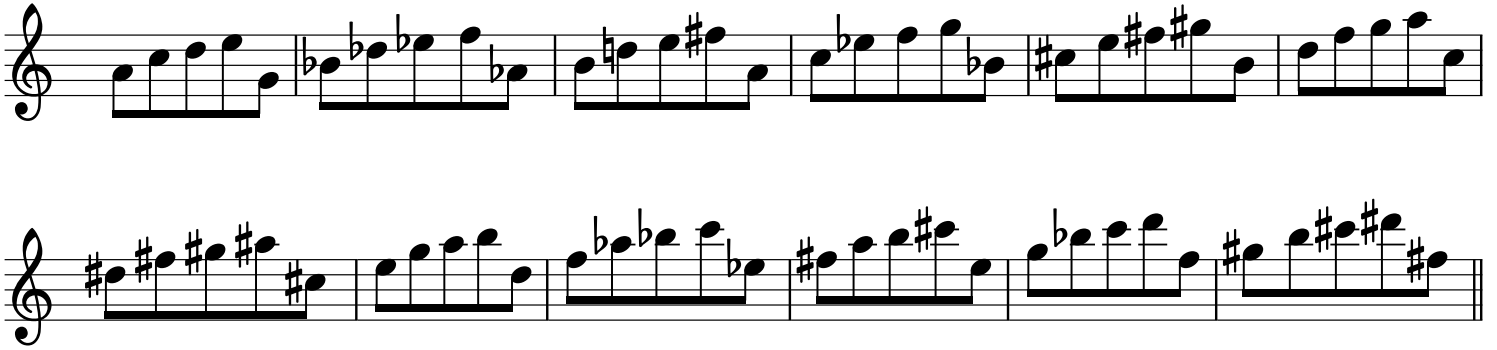


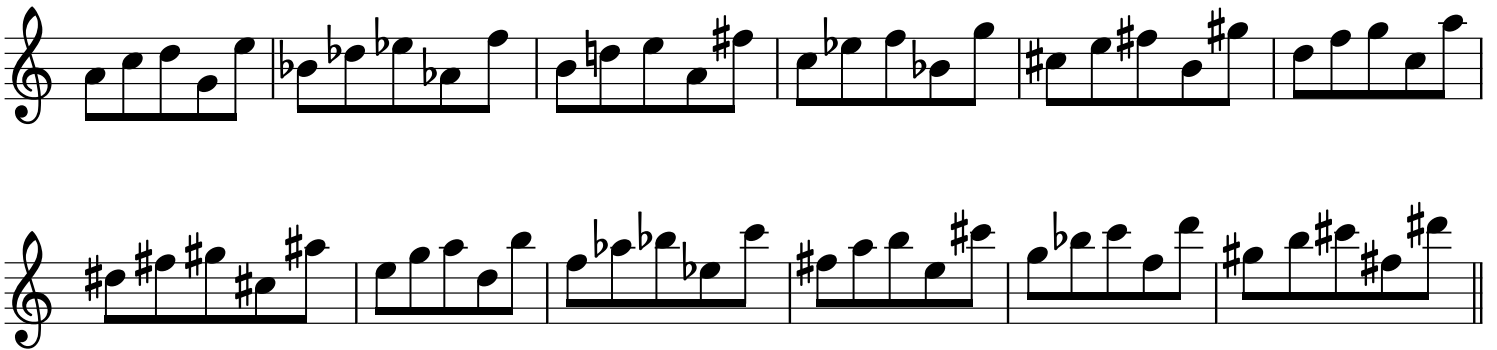
Major Penta Tonic

61235 Vol.2

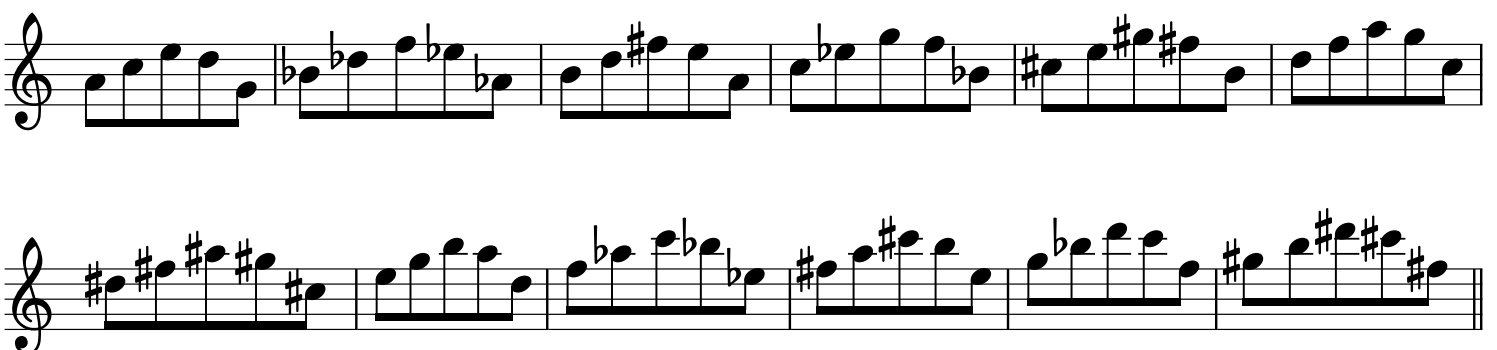
61235



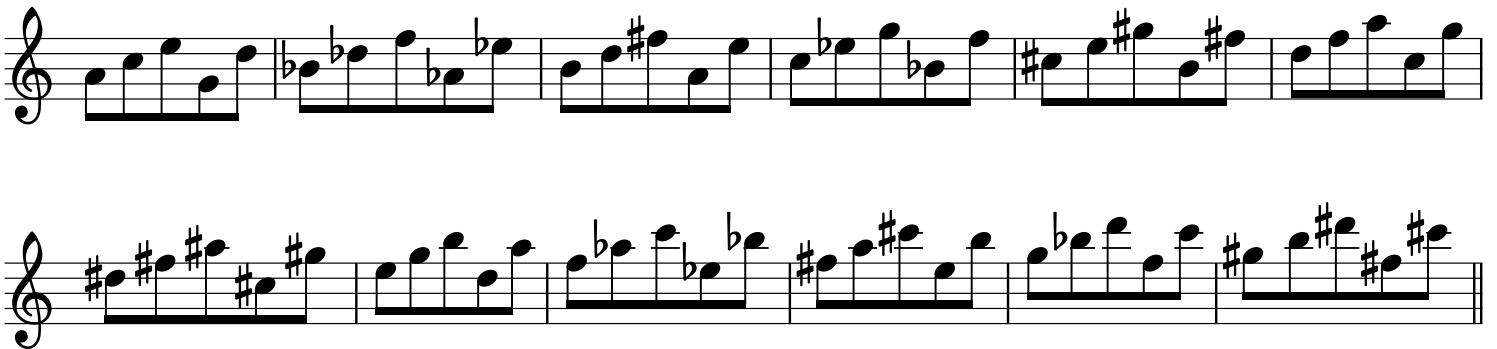
61253



61325



61352



61523

Exercise 61523 consists of two staves of music. The first staff contains six measures of music, and the second staff contains six measures. The key signature changes from one flat (B-flat) to one sharp (F-sharp) between the two staves. The notes are primarily eighth and quarter notes.

61532

Exercise 61532 consists of two staves of music. The first staff contains six measures of music, and the second staff contains six measures. The key signature changes from one flat (B-flat) to one sharp (F-sharp) between the two staves. The notes are primarily eighth and quarter notes.

62135

Exercise 62135 consists of two staves of music. The first staff contains six measures of music, and the second staff contains six measures. The key signature changes from one flat (B-flat) to one sharp (F-sharp) between the two staves. The notes are primarily eighth and quarter notes.

62153

Exercise 62153 consists of two staves of music. The first staff contains six measures of music, and the second staff contains six measures. The key signature changes from one flat (B-flat) to one sharp (F-sharp) between the two staves. The notes are primarily eighth and quarter notes.

62315

Exercise 62315 consists of two staves of music. The first staff contains six measures: a C major scale (C4-D4-E4-F4-G4-A4-B4), a B-flat major scale (Bb4-C5-D5-Eb5-F5-Gb5), a D major scale (D4-E4-F#4-G4-A4-B4), a C major scale (C4-D4-E4-F4-G4-A4-B4), a D major scale (D4-E4-F#4-G4-A4-B4), and a C major scale (C4-D4-E4-F4-G4-A4-B4). The second staff contains six measures: a D major scale (D4-E4-F#4-G4-A4-B4), a C major scale (C4-D4-E4-F4-G4-A4-B4), a B-flat major scale (Bb4-C5-D5-Eb5-F5-Gb5), a D major scale (D4-E4-F#4-G4-A4-B4), a C major scale (C4-D4-E4-F4-G4-A4-B4), and a D major scale (D4-E4-F#4-G4-A4-B4).

62351

Exercise 62351 consists of two staves of music. The first staff contains six measures: a C major scale (C4-D4-E4-F4-G4-A4-B4), a B-flat major scale (Bb4-C5-D5-Eb5-F5-Gb5), a D major scale (D4-E4-F#4-G4-A4-B4), a C major scale (C4-D4-E4-F4-G4-A4-B4), a D major scale (D4-E4-F#4-G4-A4-B4), and a C major scale (C4-D4-E4-F4-G4-A4-B4). The second staff contains six measures: a D major scale (D4-E4-F#4-G4-A4-B4), a C major scale (C4-D4-E4-F4-G4-A4-B4), a B-flat major scale (Bb4-C5-D5-Eb5-F5-Gb5), a D major scale (D4-E4-F#4-G4-A4-B4), a C major scale (C4-D4-E4-F4-G4-A4-B4), and a D major scale (D4-E4-F#4-G4-A4-B4).

62513

Exercise 62513 consists of two staves of music. The first staff contains six measures: a C major scale (C4-D4-E4-F4-G4-A4-B4), a B-flat major scale (Bb4-C5-D5-Eb5-F5-Gb5), a D major scale (D4-E4-F#4-G4-A4-B4), a C major scale (C4-D4-E4-F4-G4-A4-B4), a D major scale (D4-E4-F#4-G4-A4-B4), and a C major scale (C4-D4-E4-F4-G4-A4-B4). The second staff contains six measures: a D major scale (D4-E4-F#4-G4-A4-B4), a C major scale (C4-D4-E4-F4-G4-A4-B4), a B-flat major scale (Bb4-C5-D5-Eb5-F5-Gb5), a D major scale (D4-E4-F#4-G4-A4-B4), a C major scale (C4-D4-E4-F4-G4-A4-B4), and a D major scale (D4-E4-F#4-G4-A4-B4).

62531

Exercise 62531 consists of two staves of music. The first staff contains six measures: a C major scale (C4-D4-E4-F4-G4-A4-B4), a B-flat major scale (Bb4-C5-D5-Eb5-F5-Gb5), a D major scale (D4-E4-F#4-G4-A4-B4), a C major scale (C4-D4-E4-F4-G4-A4-B4), a D major scale (D4-E4-F#4-G4-A4-B4), and a C major scale (C4-D4-E4-F4-G4-A4-B4). The second staff contains six measures: a D major scale (D4-E4-F#4-G4-A4-B4), a C major scale (C4-D4-E4-F4-G4-A4-B4), a B-flat major scale (Bb4-C5-D5-Eb5-F5-Gb5), a D major scale (D4-E4-F#4-G4-A4-B4), a C major scale (C4-D4-E4-F4-G4-A4-B4), and a D major scale (D4-E4-F#4-G4-A4-B4).

63125

Exercise 63125 consists of two staves of music. The first staff contains six measures of music, and the second staff contains six measures. The key signature changes from one sharp (F#) to one flat (Bb) in the second measure of the first staff, and then to two flats (Bb, Eb) in the second measure of the second staff. The notes are primarily eighth and quarter notes.

63152

Exercise 63152 consists of two staves of music. The first staff contains six measures of music, and the second staff contains six measures. The key signature changes from one sharp (F#) to one flat (Bb) in the second measure of the first staff, and then to two flats (Bb, Eb) in the second measure of the second staff. The notes are primarily eighth and quarter notes.

63215

Exercise 63215 consists of two staves of music. The first staff contains six measures of music, and the second staff contains six measures. The key signature changes from one sharp (F#) to one flat (Bb) in the second measure of the first staff, and then to two flats (Bb, Eb) in the second measure of the second staff. The notes are primarily eighth and quarter notes.

63251

Exercise 63251 consists of two staves of music. The first staff contains six measures of music, and the second staff contains six measures. The key signature changes from one sharp (F#) to one flat (Bb) in the second measure of the first staff, and then to two flats (Bb, Eb) in the second measure of the second staff. The notes are primarily eighth and quarter notes.

63512

Two staves of musical notation for exercise 63512. The first staff contains six measures of music, and the second staff contains six measures. The notation includes various accidentals such as sharps, flats, and naturals, and features a double bar line at the end of the second staff.

63521

Two staves of musical notation for exercise 63521. The first staff contains six measures of music, and the second staff contains six measures. The notation includes various accidentals such as sharps, flats, and naturals, and features a double bar line at the end of the second staff.

65123

Two staves of musical notation for exercise 65123. The first staff contains six measures of music, and the second staff contains six measures. The notation includes various accidentals such as sharps, flats, and naturals, and features a double bar line at the end of the second staff.

65132

Two staves of musical notation for exercise 65132. The first staff contains six measures of music, and the second staff contains six measures. The notation includes various accidentals such as sharps, flats, and naturals, and features a double bar line at the end of the second staff.

65213

Two staves of musical notation for exercise 65213. The first staff contains six measures of music, and the second staff contains six measures. The notation includes various accidentals (sharps, flats, and naturals) and a double bar line at the end of the second staff.

65231

Two staves of musical notation for exercise 65231. The first staff contains six measures of music, and the second staff contains six measures. The notation includes various accidentals (sharps, flats, and naturals) and a double bar line at the end of the second staff.

65312

Two staves of musical notation for exercise 65312. The first staff contains six measures of music, and the second staff contains six measures. The notation includes various accidentals (sharps, flats, and naturals) and a double bar line at the end of the second staff.

65321

Two staves of musical notation for exercise 65321. The first staff contains six measures of music, and the second staff contains six measures. The notation includes various accidentals (sharps, flats, and naturals) and a double bar line at the end of the second staff.