

# Major Penta Tonic

12356 Var.1

Chromatic Up

12356

12365

12536

12563

12635

12653

13256

Exercise 13256 consists of two staves of music. The first staff contains six measures of music with notes and accidentals (sharps and flats) above the staff. The second staff contains six measures of music with notes and accidentals below the staff.

13265

Exercise 13265 consists of two staves of music. The first staff contains six measures of music with notes and accidentals above the staff. The second staff contains six measures of music with notes and accidentals below the staff.

13526

Exercise 13526 consists of two staves of music. The first staff contains six measures of music with notes and accidentals above the staff. The second staff contains six measures of music with notes and accidentals below the staff.

13562

Exercise 13562 consists of two staves of music. The first staff contains six measures of music with notes and accidentals above the staff. The second staff contains six measures of music with notes and accidentals below the staff.

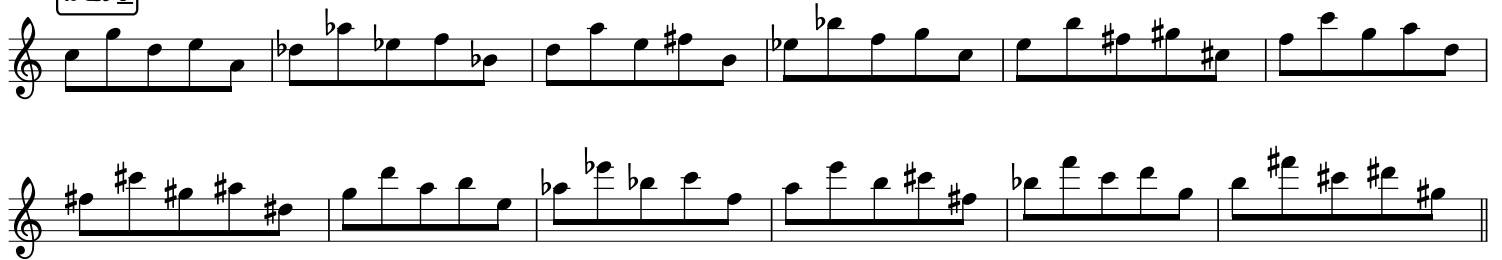
13625

Exercise 13625 consists of two staves of music. The first staff contains six measures of music with notes and accidentals above the staff. The second staff contains six measures of music with notes and accidentals below the staff.

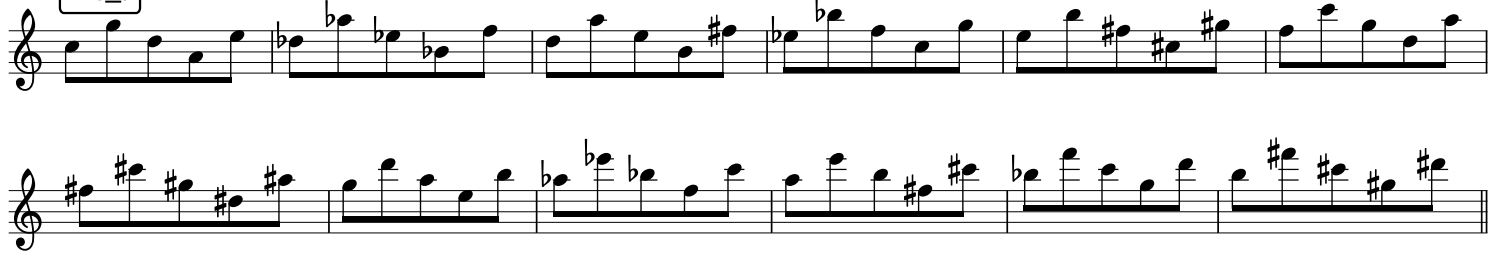
13652

Exercise 13652 consists of two staves of music. The first staff contains six measures of music with notes and accidentals above the staff. The second staff contains six measures of music with notes and accidentals below the staff.

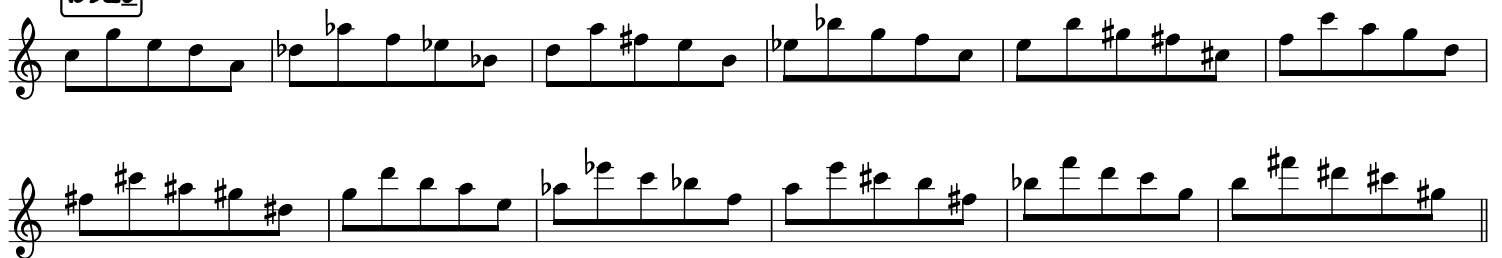
15236



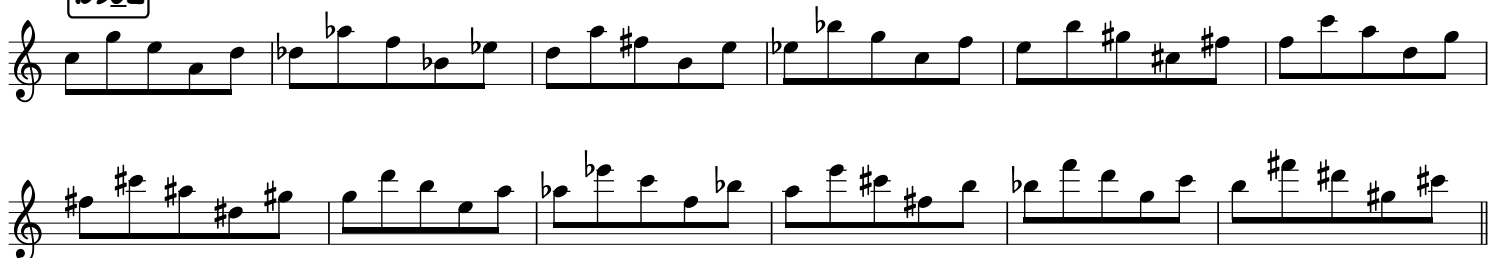
15263



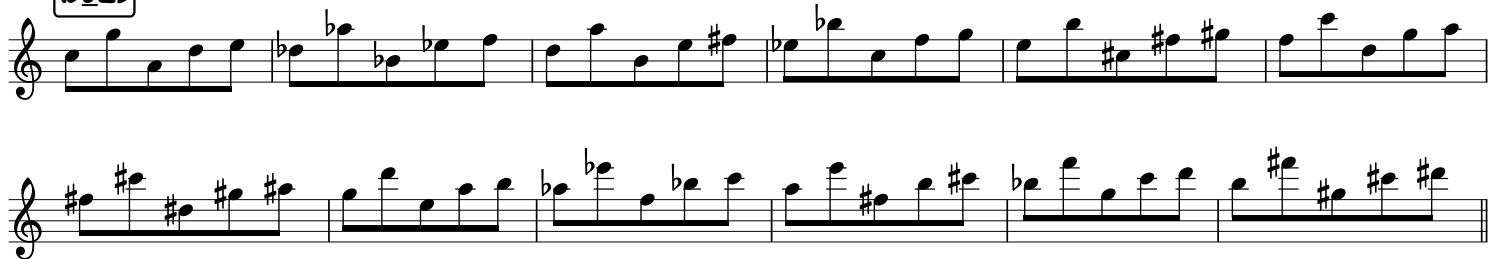
15326



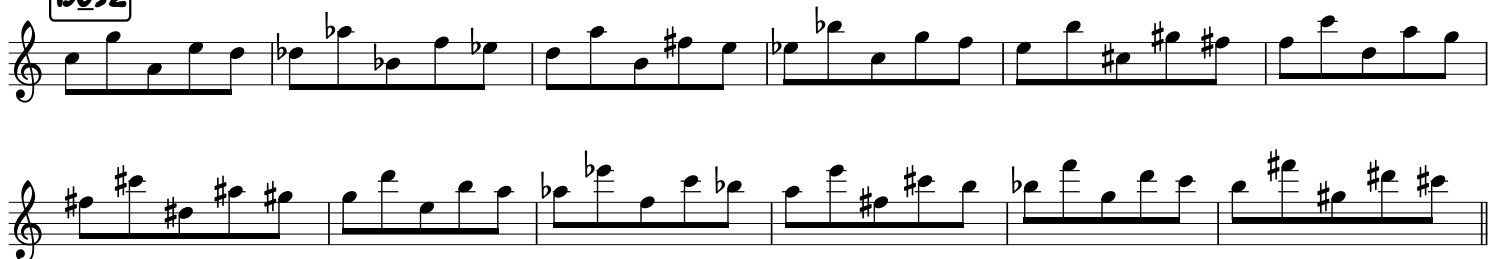
15362



15623



15632



16235

Exercise 16235 is presented on two staves of music. The first staff contains six measures of a melodic line, featuring various intervals and accidentals such as flats and sharps. The second staff contains six measures of a harmonic accompaniment, primarily consisting of chords and dyads that support the melody.

16253

Exercise 16253 is presented on two staves of music. The first staff contains six measures of a melodic line, featuring various intervals and accidentals such as flats and sharps. The second staff contains six measures of a harmonic accompaniment, primarily consisting of chords and dyads that support the melody.

16325

Exercise 16325 is presented on two staves of music. The first staff contains six measures of a melodic line, featuring various intervals and accidentals such as flats and sharps. The second staff contains six measures of a harmonic accompaniment, primarily consisting of chords and dyads that support the melody.

16352

Exercise 16352 is presented on two staves of music. The first staff contains six measures of a melodic line, featuring various intervals and accidentals such as flats and sharps. The second staff contains six measures of a harmonic accompaniment, primarily consisting of chords and dyads that support the melody.

16523

Exercise 16523 is presented on two staves of music. The first staff contains six measures of a melodic line, featuring various intervals and accidentals such as flats and sharps. The second staff contains six measures of a harmonic accompaniment, primarily consisting of chords and dyads that support the melody.

16532

Exercise 16532 is presented on two staves of music. The first staff contains six measures of a melodic line, featuring various intervals and accidentals such as flats and sharps. The second staff contains six measures of a harmonic accompaniment, primarily consisting of chords and dyads that support the melody.