

# Major Penta Tonic

12356 Basic

Major 2nd Up

12356



12365



12536



12563



12635



12653



13256

Two staves of musical notation for rhythm 13256. The first staff shows a sequence of notes: C4, D4, E4, F4, G4, A4, B4, C5, D5, E5, F5, G5, A5, B5, C6. The second staff shows a sequence of notes: B3, A3, G3, F3, E3, D3, C3, B2, A2, G2, F2, E2, D2, C2, B1.

13265

Two staves of musical notation for rhythm 13265. The first staff shows a sequence of notes: C4, D4, E4, F4, G4, A4, B4, C5, D5, E5, F5, G5, A5, B5, C6. The second staff shows a sequence of notes: B3, A3, G3, F3, E3, D3, C3, B2, A2, G2, F2, E2, D2, C2, B1.

13526

Two staves of musical notation for rhythm 13526. The first staff shows a sequence of notes: C4, D4, E4, F4, G4, A4, B4, C5, D5, E5, F5, G5, A5, B5, C6. The second staff shows a sequence of notes: B3, A3, G3, F3, E3, D3, C3, B2, A2, G2, F2, E2, D2, C2, B1.

13562

Two staves of musical notation for rhythm 13562. The first staff shows a sequence of notes: C4, D4, E4, F4, G4, A4, B4, C5, D5, E5, F5, G5, A5, B5, C6. The second staff shows a sequence of notes: B3, A3, G3, F3, E3, D3, C3, B2, A2, G2, F2, E2, D2, C2, B1.

13625

Two staves of musical notation for rhythm 13625. The first staff shows a sequence of notes: C4, D4, E4, F4, G4, A4, B4, C5, D5, E5, F5, G5, A5, B5, C6. The second staff shows a sequence of notes: B3, A3, G3, F3, E3, D3, C3, B2, A2, G2, F2, E2, D2, C2, B1.

13652

Two staves of musical notation for rhythm 13652. The first staff shows a sequence of notes: C4, D4, E4, F4, G4, A4, B4, C5, D5, E5, F5, G5, A5, B5, C6. The second staff shows a sequence of notes: B3, A3, G3, F3, E3, D3, C3, B2, A2, G2, F2, E2, D2, C2, B1.

15236

Two staves of musical notation for exercise 15236. The first staff contains six measures of music, and the second staff contains six measures. The key signature has one flat (B-flat), and the time signature is 4/4. The melody consists of eighth and quarter notes with various accidentals.

15263

Two staves of musical notation for exercise 15263. The first staff contains six measures of music, and the second staff contains six measures. The key signature has one flat (B-flat), and the time signature is 4/4. The melody consists of eighth and quarter notes with various accidentals.

15326

Two staves of musical notation for exercise 15326. The first staff contains six measures of music, and the second staff contains six measures. The key signature has one flat (B-flat), and the time signature is 4/4. The melody consists of eighth and quarter notes with various accidentals.

15362

Two staves of musical notation for exercise 15362. The first staff contains six measures of music, and the second staff contains six measures. The key signature has one flat (B-flat), and the time signature is 4/4. The melody consists of eighth and quarter notes with various accidentals.

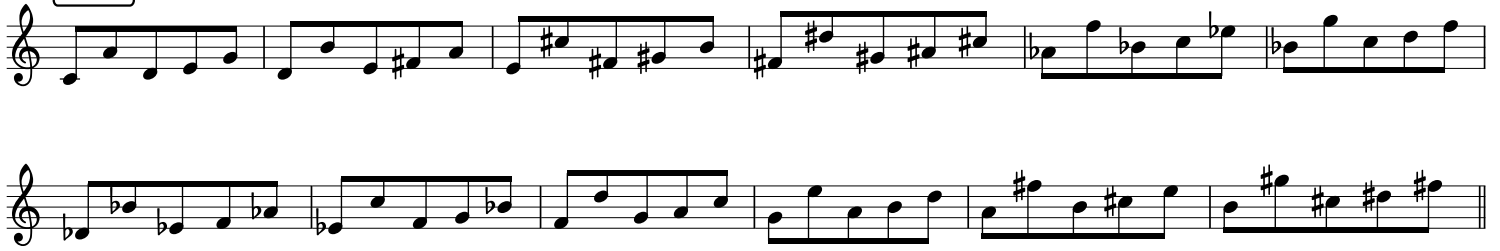
15623

Two staves of musical notation for exercise 15623. The first staff contains six measures of music, and the second staff contains six measures. The key signature has one flat (B-flat), and the time signature is 4/4. The melody consists of eighth and quarter notes with various accidentals.

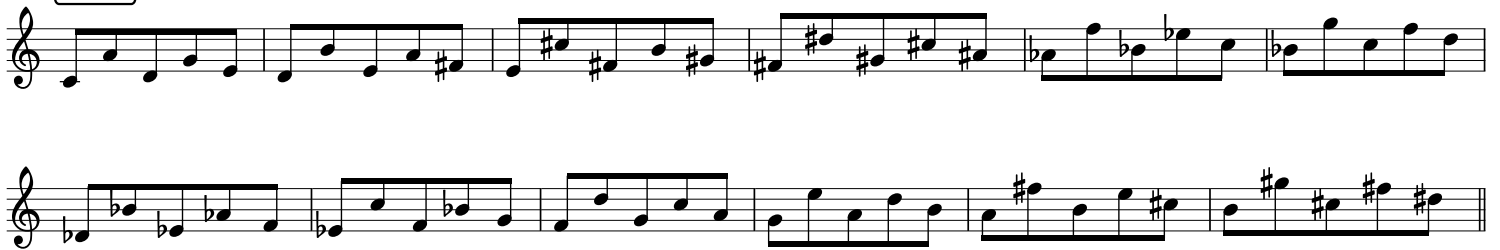
15632

Two staves of musical notation for exercise 15632. The first staff contains six measures of music, and the second staff contains six measures. The key signature has one flat (B-flat), and the time signature is 4/4. The melody consists of eighth and quarter notes with various accidentals.

16235



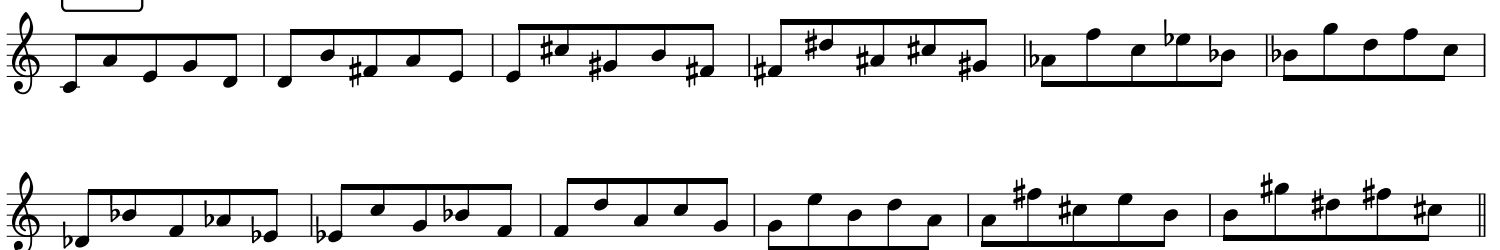
16253



16325



16352



16523



16532

