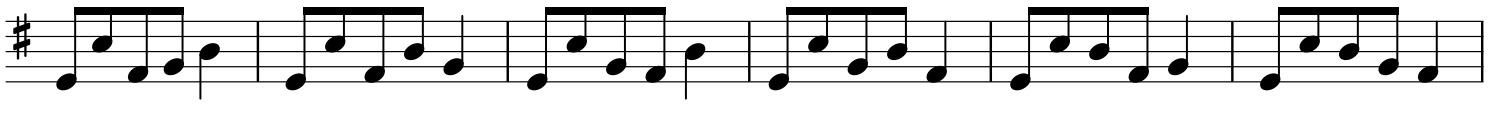


minor Penta

1-b3-4-5-b7 Vae.4



The image displays ten staves of musical notation, each beginning with a treble clef and a key signature of one sharp (F#), indicating the key of G major. The notation consists of eighth and sixteenth notes, often beamed together in groups of four or six, creating a rhythmic pattern characteristic of jazz. The melody is consistent across all staves, with a slight variation in the final staff where the notes are beamed together and end with a double bar line. The overall style is that of a simple, repetitive jazz exercise or a short piece.