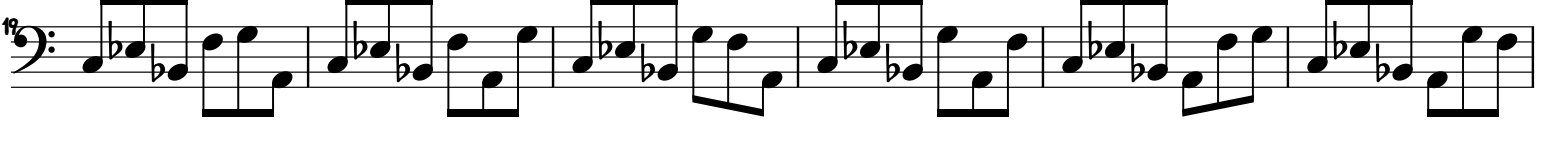


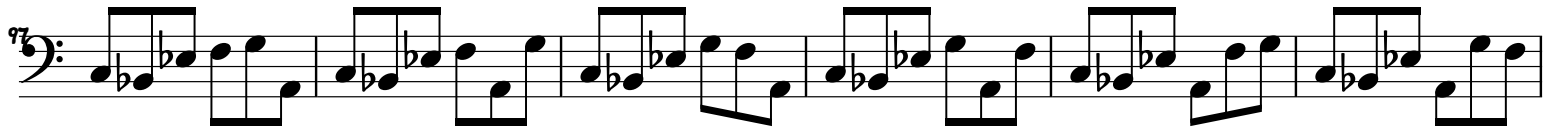
Minor Penta + 6

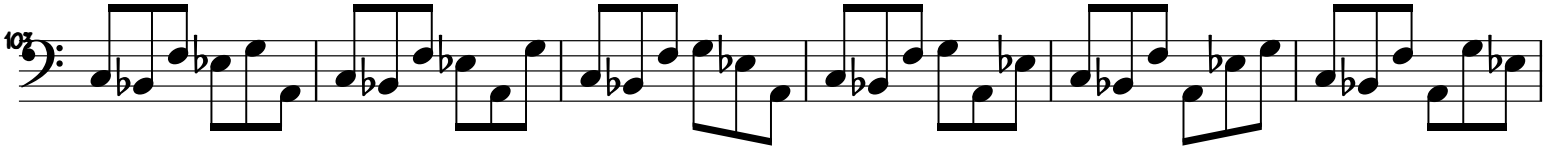
1-b3-4-5-6-b7

Variation.2



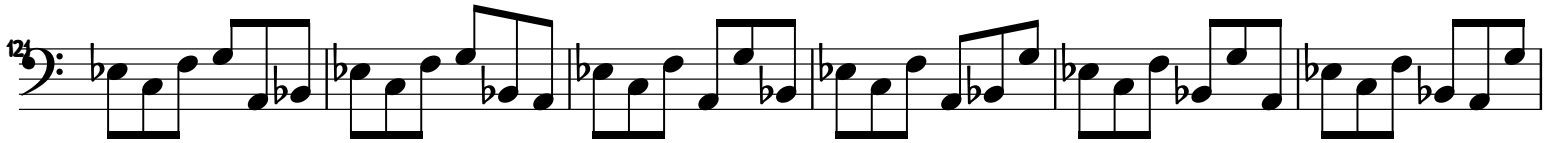


97: 

103: 

109: 

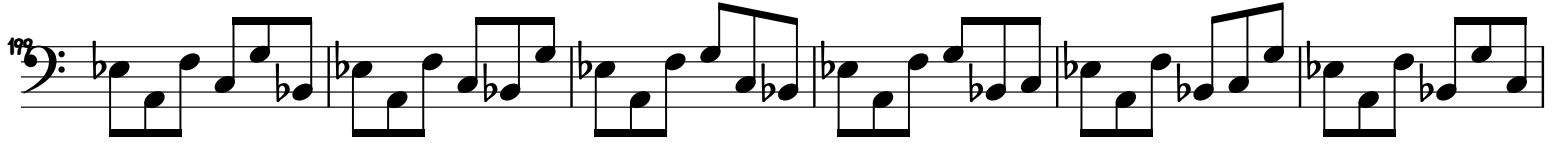
115: 

121: 

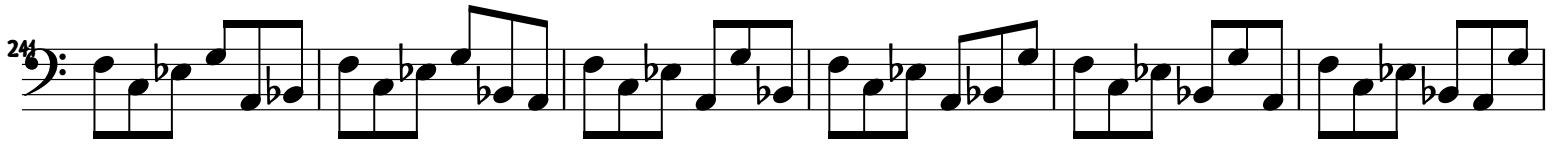
127: 

133: 

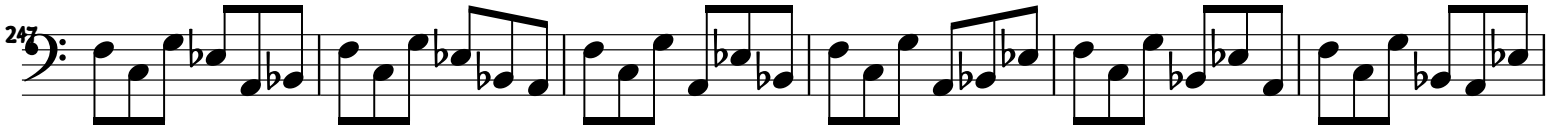
139: 




241

Musical notation for measure 241 in bass clef. It features a series of eighth notes with a descending melodic line: G2, F2, E2, D2, C2, B1, A1, G1.

247

Musical notation for measure 247 in bass clef. It features a series of eighth notes with a descending melodic line: G2, F2, E2, D2, C2, B1, A1, G1.

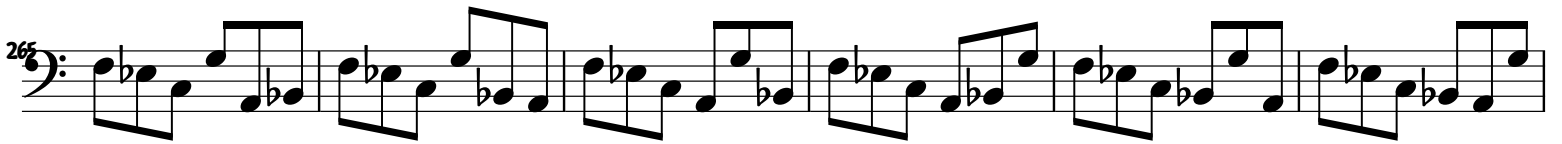
253

Musical notation for measure 253 in bass clef. It features a series of eighth notes with a descending melodic line: G2, F2, E2, D2, C2, B1, A1, G1.

259

Musical notation for measure 259 in bass clef. It features a series of eighth notes with a descending melodic line: G2, F2, E2, D2, C2, B1, A1, G1.

265

Musical notation for measure 265 in bass clef. It features a series of eighth notes with a descending melodic line: G2, F2, E2, D2, C2, B1, A1, G1.

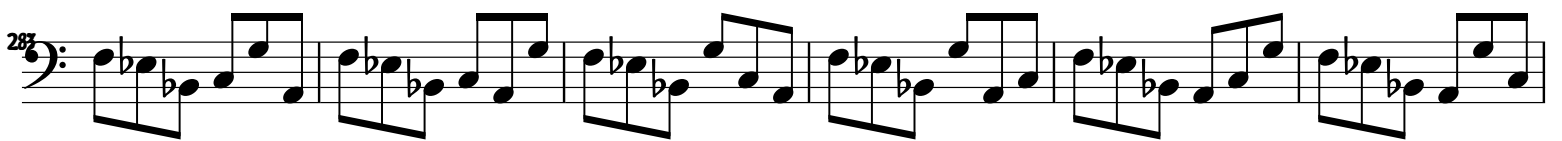
271

Musical notation for measure 271 in bass clef. It features a series of eighth notes with a descending melodic line: G2, F2, E2, D2, C2, B1, A1, G1.

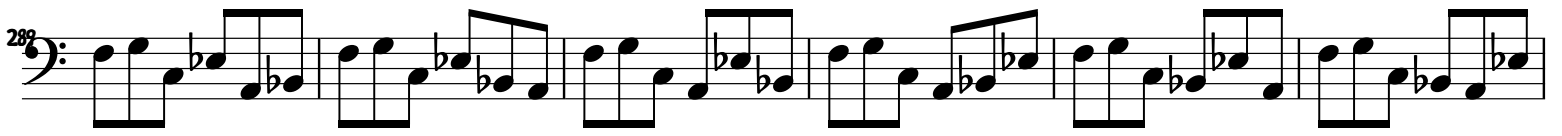
277

Musical notation for measure 277 in bass clef. It features a series of eighth notes with a descending melodic line: G2, F2, E2, D2, C2, B1, A1, G1.

283

Musical notation for measure 283 in bass clef. It features a series of eighth notes with a descending melodic line: G2, F2, E2, D2, C2, B1, A1, G1.

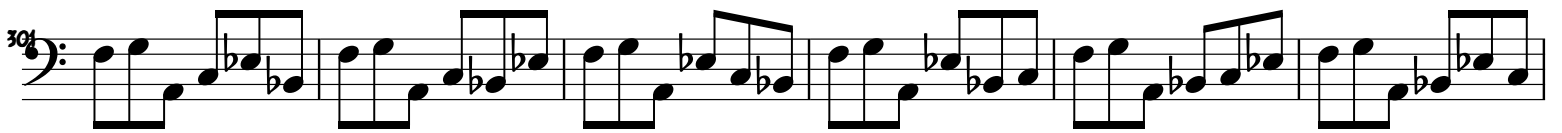
282



295



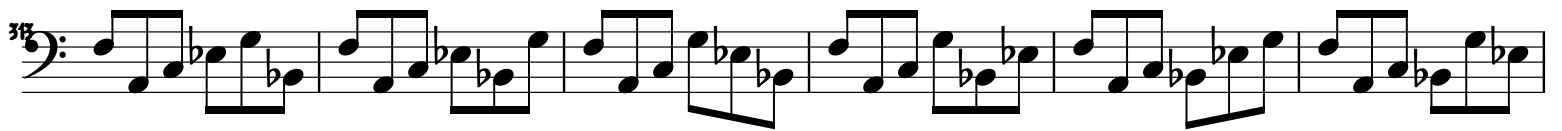
301



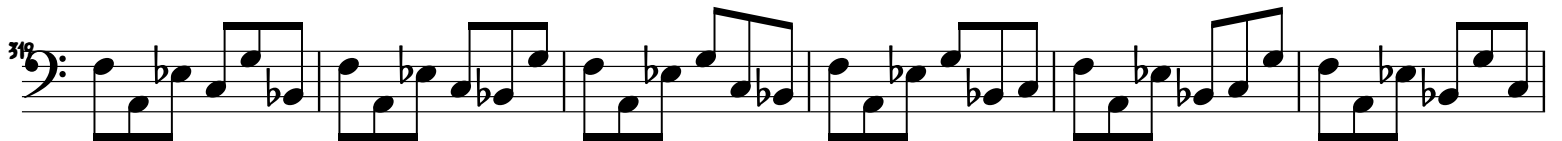
307



315



319

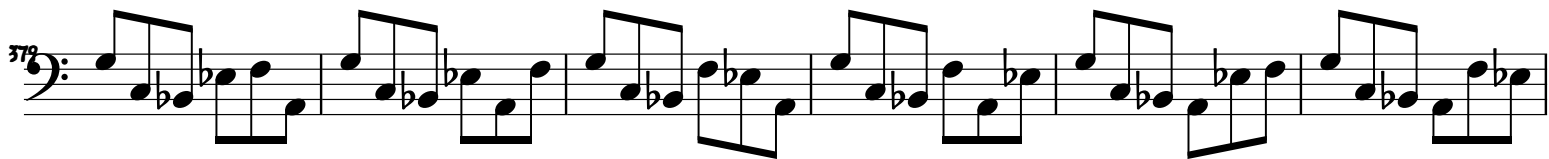
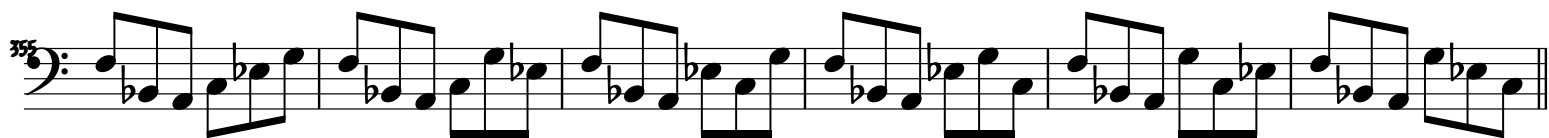
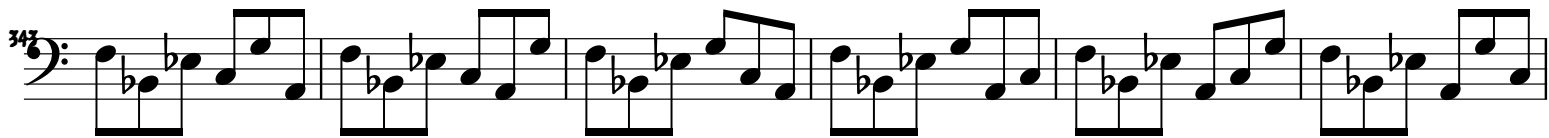
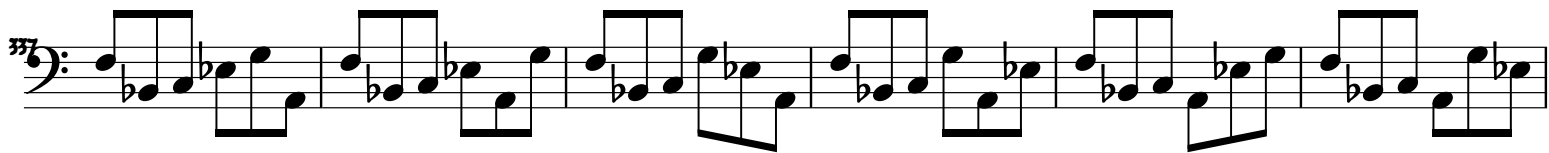


325



331





385

391

397

403

409

415

421

427

437

437: Musical staff with bass clef, six measures of eighth-note chords. The notes are: G2, A2, B2, C3, D3, E3, F3, G3, A3, B3, C4, D4, E4, F4, G4, A4, B4, C5.

439

439: Musical staff with bass clef, six measures of eighth-note chords. The notes are: G2, A2, B2, C3, D3, E3, F3, G3, A3, B3, C4, D4, E4, F4, G4, A4, B4, C5.

445

445: Musical staff with bass clef, six measures of eighth-note chords. The notes are: G2, A2, B2, C3, D3, E3, F3, G3, A3, B3, C4, D4, E4, F4, G4, A4, B4, C5.

451

451: Musical staff with bass clef, six measures of eighth-note chords. The notes are: G2, A2, B2, C3, D3, E3, F3, G3, A3, B3, C4, D4, E4, F4, G4, A4, B4, C5.

457

457: Musical staff with bass clef, six measures of eighth-note chords. The notes are: G2, A2, B2, C3, D3, E3, F3, G3, A3, B3, C4, D4, E4, F4, G4, A4, B4, C5.

463

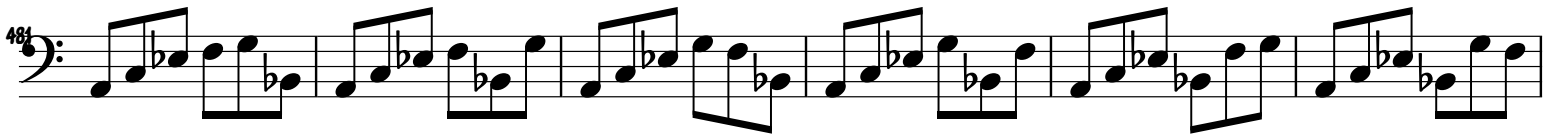
463: Musical staff with bass clef, six measures of eighth-note chords. The notes are: G2, A2, B2, C3, D3, E3, F3, G3, A3, B3, C4, D4, E4, F4, G4, A4, B4, C5.

469

469: Musical staff with bass clef, six measures of eighth-note chords. The notes are: G2, A2, B2, C3, D3, E3, F3, G3, A3, B3, C4, D4, E4, F4, G4, A4, B4, C5.

475

475: Musical staff with bass clef, six measures of eighth-note chords. The notes are: G2, A2, B2, C3, D3, E3, F3, G3, A3, B3, C4, D4, E4, F4, G4, A4, B4, C5.



577

587

597

607

617

627

637

647

