

Minor Penta + 6

1-b3-4-5-6-b7

Variation.2







145 

151 

157 

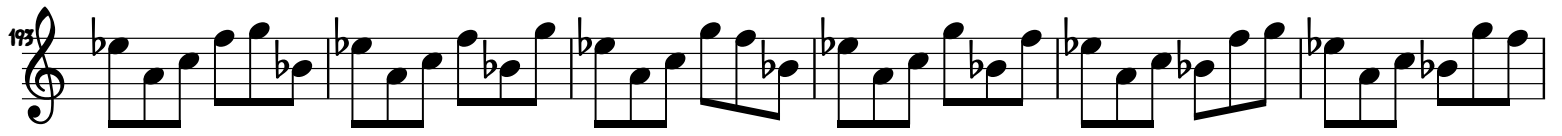
163 

169 

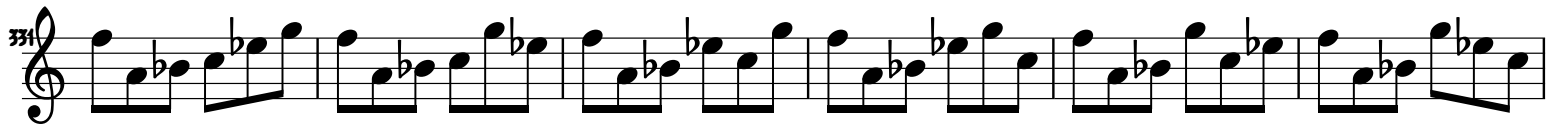
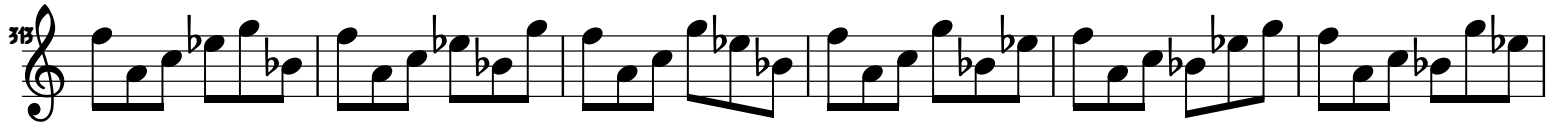
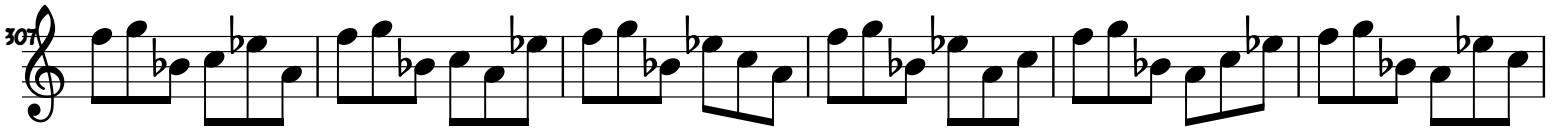
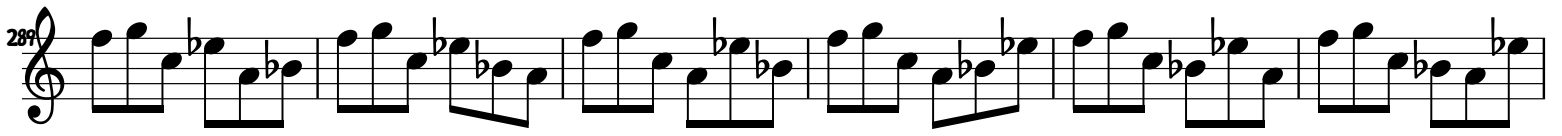
175 

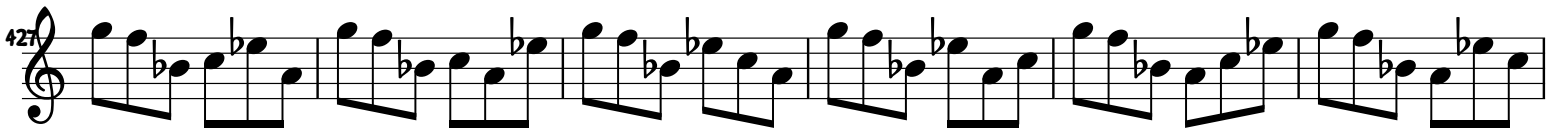
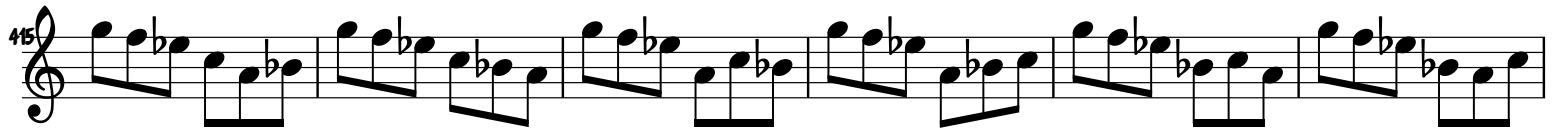
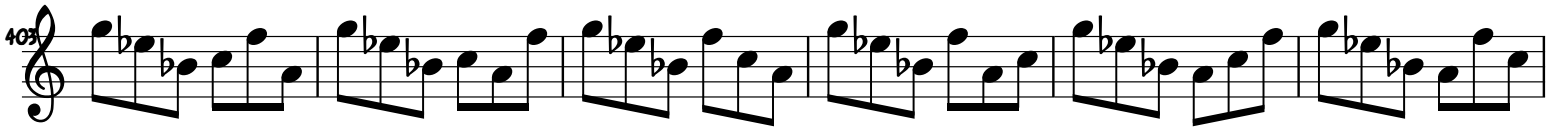
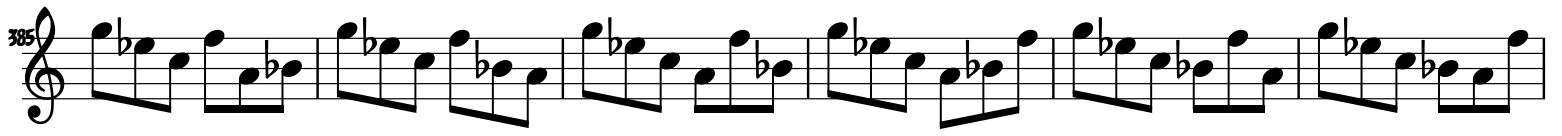
181 

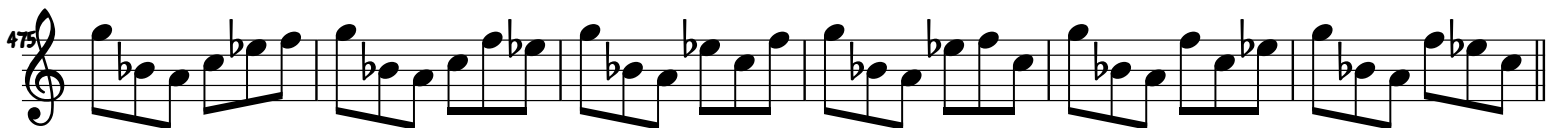
187 











481

A musical staff in treble clef starting at measure 481. The key signature has two flats (B-flat and E-flat). The melody consists of eighth-note patterns with various intervals, including half-note pairs and eighth-note pairs.

487

A musical staff in treble clef starting at measure 487. The key signature has two flats. The melody continues with eighth-note patterns similar to the previous staff.

493

A musical staff in treble clef starting at measure 493. The key signature has two flats. The melody continues with eighth-note patterns.

499

A musical staff in treble clef starting at measure 499. The key signature has two flats. The melody continues with eighth-note patterns.

505

A musical staff in treble clef starting at measure 505. The key signature has two flats. The melody continues with eighth-note patterns.

511

A musical staff in treble clef starting at measure 511. The key signature has two flats. The melody continues with eighth-note patterns.

517

A musical staff in treble clef starting at measure 517. The key signature has two flats. The melody continues with eighth-note patterns.

523

A musical staff in treble clef starting at measure 523. The key signature has two flats. The melody continues with eighth-note patterns.



