

Minor Penta + #4

1-b3-4-#4-5-b7

Variation 1





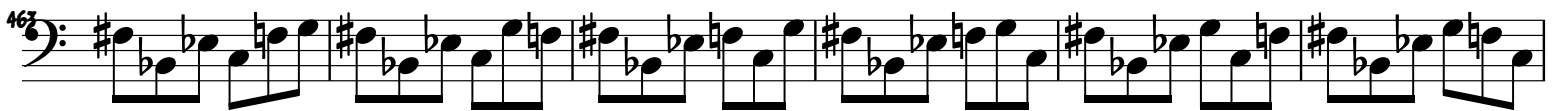


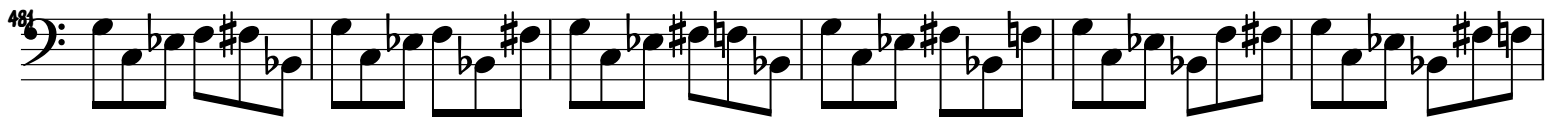












522

A bass clef staff with six measures of music. Each measure contains two eighth notes. The notes are: G2 (bass), A2, Bb2, C#2, Bb2, A2.

535

A bass clef staff with six measures of music. Each measure contains two eighth notes. The notes are: G2 (bass), A2, Bb2, C#2, Bb2, A2.

541

A bass clef staff with six measures of music. Each measure contains two eighth notes. The notes are: G2 (bass), A2, Bb2, C#2, Bb2, A2.

547

A bass clef staff with six measures of music. Each measure contains two eighth notes. The notes are: G2 (bass), A2, Bb2, C#2, Bb2, A2.

553

A bass clef staff with six measures of music. Each measure contains a quarter note followed by a quarter rest. The notes are: G2 (bass), A2, Bb2, C#2, Bb2, A2.

559

A bass clef staff with six measures of music. Each measure contains a quarter note followed by a quarter rest. The notes are: G2 (bass), A2, Bb2, C#2, Bb2, A2.

565

A bass clef staff with six measures of music. Each measure contains a quarter note followed by a quarter rest. The notes are: G2 (bass), A2, Bb2, C#2, Bb2, A2.

571

A bass clef staff with six measures of music. Each measure contains a quarter note followed by a quarter rest. The notes are: G2 (bass), A2, Bb2, C#2, Bb2, A2.

57: Musical staff 57: Bass clef, six measures of eighth-note chords with accidentals.

58: Musical staff 58: Bass clef, six measures of eighth-note chords with accidentals.

59: Musical staff 59: Bass clef, six measures of eighth-note chords with accidentals.

59.5: Musical staff 59.5: Bass clef, six measures of eighth-note chords with accidentals.

60: Musical staff 60: Bass clef, six measures of eighth-note chords with accidentals.

60.5: Musical staff 60.5: Bass clef, six measures of eighth-note chords with accidentals.

61: Musical staff 61: Bass clef, six measures of eighth-note chords with accidentals.

61.5: Musical staff 61.5: Bass clef, six measures of eighth-note chords with accidentals.

