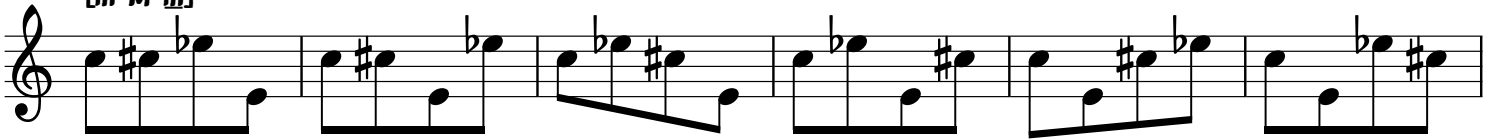


m-M~

m-M-m



[m-M-m]



[m-M-m]



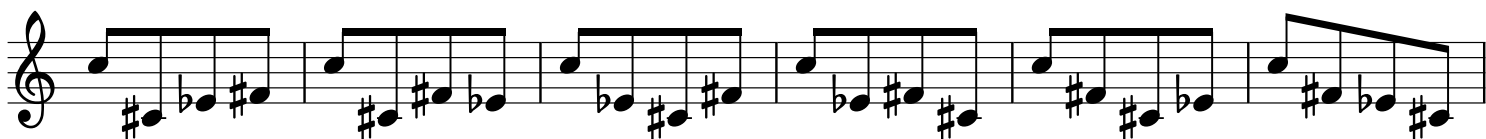
[m-M-m]



m-M-M



m-M-m3



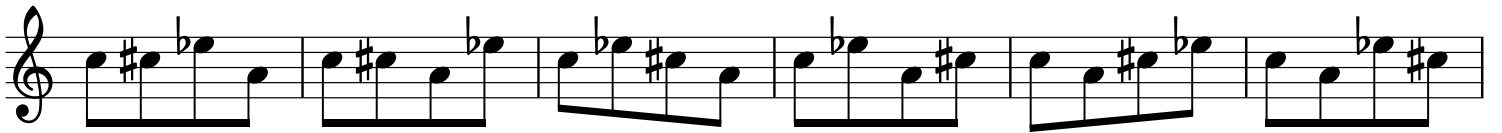
m-m-M3



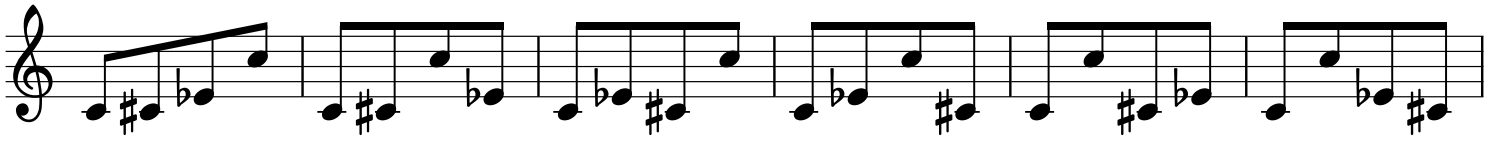
m-M-P4



m-M-a4



m-M-M6



m-m-m7



m-m-M7

Four staves of musical notation for the m-m-M7 exercise. Each staff contains six measures of music. The first staff uses a treble clef and a key signature of one flat (Bb). The notes in the first staff are: G4, A4, Bb4, C5, Bb4, A4, G4; G4, A4, Bb4, C5, Bb4, A4, G4; G4, A4, Bb4, C5, Bb4, A4, G4; G4, A4, Bb4, C5, Bb4, A4, G4; G4, A4, Bb4, C5, Bb4, A4, G4; G4, A4, Bb4, C5, Bb4, A4, G4. The second staff uses a treble clef and a key signature of one flat (Bb). The notes are: G4, A4, Bb4, C5, Bb4, A4, G4; G4, A4, Bb4, C5, Bb4, A4, G4; G4, A4, Bb4, C5, Bb4, A4, G4; G4, A4, Bb4, C5, Bb4, A4, G4; G4, A4, Bb4, C5, Bb4, A4, G4; G4, A4, Bb4, C5, Bb4, A4, G4. The third staff uses a treble clef and a key signature of one flat (Bb). The notes are: G4, A4, Bb4, C5, Bb4, A4, G4; G4, A4, Bb4, C5, Bb4, A4, G4; G4, A4, Bb4, C5, Bb4, A4, G4; G4, A4, Bb4, C5, Bb4, A4, G4; G4, A4, Bb4, C5, Bb4, A4, G4; G4, A4, Bb4, C5, Bb4, A4, G4. The fourth staff uses a treble clef and a key signature of one flat (Bb). The notes are: G4, A4, Bb4, C5, Bb4, A4, G4; G4, A4, Bb4, C5, Bb4, A4, G4; G4, A4, Bb4, C5, Bb4, A4, G4; G4, A4, Bb4, C5, Bb4, A4, G4; G4, A4, Bb4, C5, Bb4, A4, G4; G4, A4, Bb4, C5, Bb4, A4, G4.

m-m-8va

Four staves of musical notation for the m-m-8va exercise. Each staff contains six measures of music. The first staff uses a treble clef and a key signature of one flat (Bb). The notes in the first staff are: G4, A4, Bb4, C5, Bb4, A4, G4; G4, A4, Bb4, C5, Bb4, A4, G4; G4, A4, Bb4, C5, Bb4, A4, G4; G4, A4, Bb4, C5, Bb4, A4, G4; G4, A4, Bb4, C5, Bb4, A4, G4; G4, A4, Bb4, C5, Bb4, A4, G4. The second staff uses a treble clef and a key signature of one flat (Bb). The notes are: G4, A4, Bb4, C5, Bb4, A4, G4; G4, A4, Bb4, C5, Bb4, A4, G4; G4, A4, Bb4, C5, Bb4, A4, G4; G4, A4, Bb4, C5, Bb4, A4, G4; G4, A4, Bb4, C5, Bb4, A4, G4; G4, A4, Bb4, C5, Bb4, A4, G4. The third staff uses a treble clef and a key signature of one flat (Bb). The notes are: G4, A4, Bb4, C5, Bb4, A4, G4; G4, A4, Bb4, C5, Bb4, A4, G4; G4, A4, Bb4, C5, Bb4, A4, G4; G4, A4, Bb4, C5, Bb4, A4, G4; G4, A4, Bb4, C5, Bb4, A4, G4; G4, A4, Bb4, C5, Bb4, A4, G4. The fourth staff uses a treble clef and a key signature of one flat (Bb). The notes are: G4, A4, Bb4, C5, Bb4, A4, G4; G4, A4, Bb4, C5, Bb4, A4, G4; G4, A4, Bb4, C5, Bb4, A4, G4; G4, A4, Bb4, C5, Bb4, A4, G4; G4, A4, Bb4, C5, Bb4, A4, G4; G4, A4, Bb4, C5, Bb4, A4, G4.