

minor 6th Chord Broken

Table

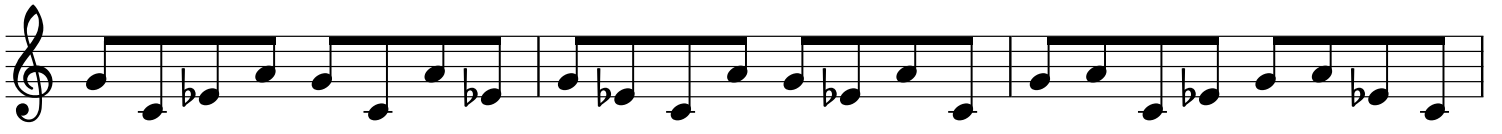
Root

Musical notation for the Root of a minor 6th chord broken. The notation is in 4/4 time and consists of four staves. The first staff shows a sequence of eighth notes: C4, B3, A3, G3, F3, E3, D3, C3. The second staff shows a sequence of eighth notes: C4, B3, A3, G3, F3, E3, D3, C3. The third staff shows a sequence of eighth notes: C4, B3, A3, G3, F3, E3, D3, C3. The fourth staff shows a sequence of eighth notes: C4, B3, A3, G3, F3, E3, D3, C3.

\flat 3rd

Musical notation for the flat 3rd of a minor 6th chord broken. The notation is in 4/4 time and consists of four staves. The first staff shows a sequence of eighth notes: C4, B3, A3, G3, F3, E3, D3, C3. The second staff shows a sequence of eighth notes: C4, B3, A3, G3, F3, E3, D3, C3. The third staff shows a sequence of eighth notes: C4, B3, A3, G3, F3, E3, D3, C3. The fourth staff shows a sequence of eighth notes: C4, B3, A3, G3, F3, E3, D3, C3.

5th



6th

