

Diminish 7th Chord Broken

Table

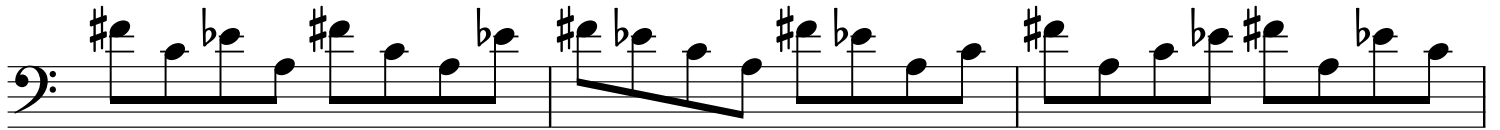
Root

Four staves of musical notation in bass clef, 4/4 time signature. The first staff begins with a 4/4 time signature. The notation shows a sequence of broken chords for the root of a diminished 7th chord, with notes moving in a stepwise fashion across the staves.

$\flat 3rd$

Four staves of musical notation in bass clef, 4/4 time signature. The notation shows a sequence of broken chords for the flat 3rd of a diminished 7th chord, with notes moving in a stepwise fashion across the staves.

b5th (#4th)



bb7th (6th)

