

Major 6th Chord Broken

Table

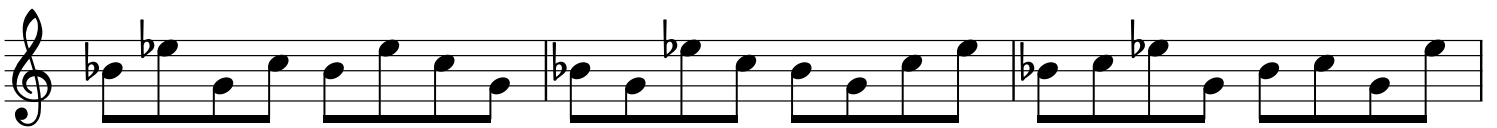
Root

Four staves of musical notation in 4/4 time, showing the root position of a Major 6th Chord broken. The first staff begins with a treble clef and a 4/4 time signature. The notes are: G4 (quarter), A4 (quarter), Bb4 (quarter), C5 (quarter), D5 (quarter), E5 (quarter), F5 (quarter), G5 (quarter). The second staff shows the notes: Bb4 (quarter), C5 (quarter), D5 (quarter), E5 (quarter), F5 (quarter), G5 (quarter), A5 (quarter), Bb5 (quarter). The third staff shows the notes: C5 (quarter), D5 (quarter), E5 (quarter), F5 (quarter), G5 (quarter), A5 (quarter), Bb5 (quarter), C6 (quarter). The fourth staff shows the notes: D5 (quarter), E5 (quarter), F5 (quarter), G5 (quarter), A5 (quarter), Bb5 (quarter), C6 (quarter), D6 (quarter).

3rd

Four staves of musical notation in 4/4 time, showing the 3rd position of a Major 6th Chord broken. The first staff begins with a treble clef and a 4/4 time signature. The notes are: Bb4 (quarter), C5 (quarter), D5 (quarter), E5 (quarter), F5 (quarter), G5 (quarter), A5 (quarter), Bb5 (quarter). The second staff shows the notes: C5 (quarter), D5 (quarter), E5 (quarter), F5 (quarter), G5 (quarter), A5 (quarter), Bb5 (quarter), C6 (quarter). The third staff shows the notes: D5 (quarter), E5 (quarter), F5 (quarter), G5 (quarter), A5 (quarter), Bb5 (quarter), C6 (quarter), D6 (quarter). The fourth staff shows the notes: E5 (quarter), F5 (quarter), G5 (quarter), A5 (quarter), Bb5 (quarter), C6 (quarter), D6 (quarter), E6 (quarter).

5th



6th

