

# Major Chord Broken

Table

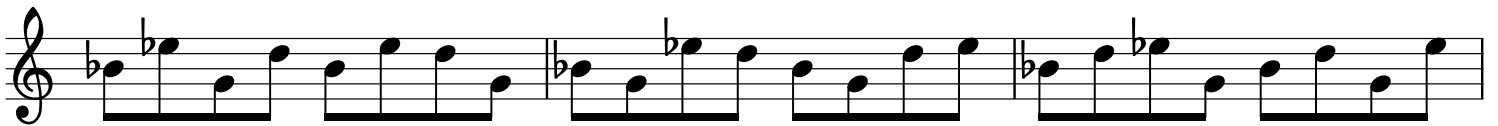
Root

Four staves of musical notation in 4/4 time, showing the Root of a Major Chord Broken Table. The first staff begins with a treble clef and a 4/4 time signature. The notation consists of eighth notes and quarter notes across four measures, with a key signature of one flat (Bb). The notes are: M1: Bb, C, D, Eb, E, F; M2: G, Ab, Bb, C, D, E; M3: F, G, Ab, Bb, C, D; M4: E, F, G, Ab, Bb, C.

3rd

Four staves of musical notation in 4/4 time, showing the 3rd of a Major Chord Broken Table. The notation consists of eighth notes and quarter notes across four measures, with a key signature of one flat (Bb). The notes are: M1: D, Eb, F, G, Ab, Bb; M2: C, D, Eb, F, G, Ab; M3: Bb, C, D, Eb, F, G; M4: Ab, Bb, C, D, Eb, F.

5th



7th

