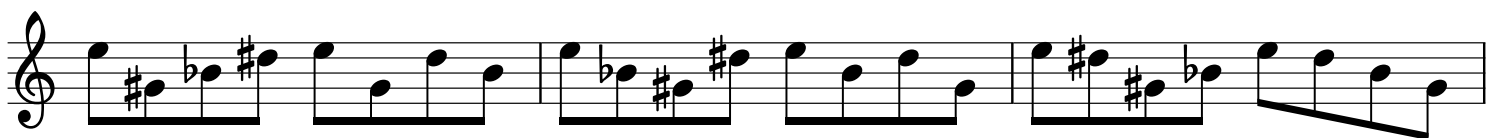
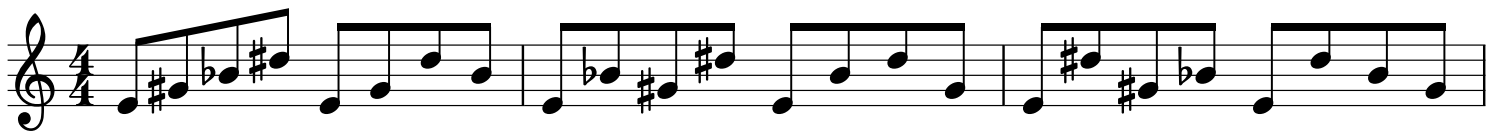


Major7^{b5} Chord Broken

Table

Root



3rd



b5th

The b5th section consists of four staves of music. Each staff begins with a treble clef and a key signature of one flat (Bb). The first staff contains three measures of music, each with a flat symbol (b) at the beginning. The second staff also contains three measures, with a flat symbol at the beginning. The third and fourth staves each contain three measures, with a flat symbol at the beginning. The notation includes various note values, accidentals (sharps and flats), and slurs.

7th

The 7th section consists of four staves of music. Each staff begins with a treble clef and a key signature of one sharp (F#). The first staff contains three measures of music, with a sharp symbol (#) at the beginning. The second staff contains three measures, with a sharp symbol at the beginning. The third and fourth staves each contain three measures, with a sharp symbol at the beginning. The notation includes various note values, accidentals (sharps and flats), and slurs.