

Major7^{b5} Chord Broken

Table

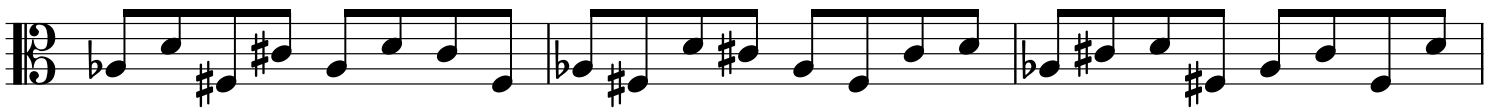
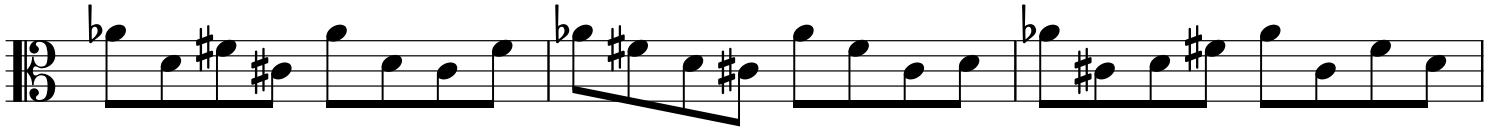
Root

Musical notation for the Root of Major7^{b5} chord broken in 4/4, 3/4, and 2/4 time signatures. The notation consists of four staves. The first staff is in 4/4 time, the second and third are in 3/4 time, and the fourth is in 2/4 time. Each staff shows a sequence of notes representing the broken chord in a specific rhythmic pattern.

3rd

Musical notation for the 3rd of Major7^{b5} chord broken in 4/4, 3/4, and 2/4 time signatures. The notation consists of four staves. The first staff is in 4/4 time, the second and third are in 3/4 time, and the fourth is in 2/4 time. Each staff shows a sequence of notes representing the broken chord in a specific rhythmic pattern.

b5th



7th

