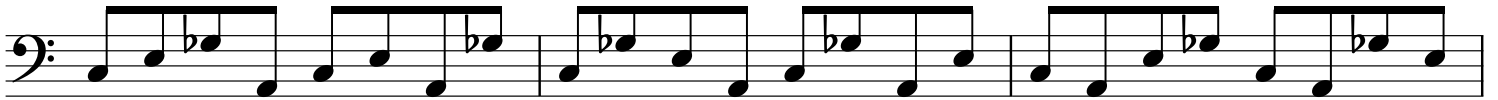


Major6th ^b5 Chord Broken

Table

Root



3rd



b5th

The b5th section consists of four staves of music in bass clef. The first staff contains six measures of eighth-note patterns: G2-B1, A1-G1, F1-E1, D1-C1, B1-A1, G1-F1. The second staff contains six measures: G2-A2, B2-C3, A2-G2, F2-E2, D2-C2, B2-A2. The third staff contains six measures: G2-A2, B2-C3, A2-G2, F2-E2, D2-C2, B2-A2. The fourth staff contains six measures: G2-A2, B2-C3, A2-G2, F2-E2, D2-C2, B2-A2.

6th

The 6th section consists of four staves of music in bass clef. The first staff contains six measures: G2-A2, B2-C3, A2-G2, F2-E2, D2-C2, B2-A2. The second staff contains six measures: G2-A2, B2-C3, A2-G2, F2-E2, D2-C2, B2-A2. The third staff contains six measures: G2-A2, B2-C3, A2-G2, F2-E2, D2-C2, B2-A2. The fourth staff contains six measures: G2-A2, B2-C3, A2-G2, F2-E2, D2-C2, B2-A2.