

4 Chord Diatonic Scale Approach

Melodic minor Scale Up Form

5137

Exercise 5137: Melodic minor scale approach for the 4-chord progression 5137. The notation is in treble clef, 4/4 time, and consists of two staves. The first staff shows the scale in two parts: the first four measures (5-1-3-7) and the last four measures (7-1-3-5). The second staff shows the scale in two parts: the first four measures (5-1-3-7) and the last four measures (7-1-3-5).

5173

Exercise 5173: Melodic minor scale approach for the 4-chord progression 5173. The notation is in treble clef, 4/4 time, and consists of two staves. The first staff shows the scale in two parts: the first four measures (5-1-7-3) and the last four measures (3-7-1-5). The second staff shows the scale in two parts: the first four measures (5-1-7-3) and the last four measures (3-7-1-5).

5317

Exercise 5317: Melodic minor scale approach for the 4-chord progression 5317. The notation is in treble clef, 4/4 time, and consists of two staves. The first staff shows the scale in two parts: the first four measures (5-3-1-7) and the last four measures (7-1-3-5). The second staff shows the scale in two parts: the first four measures (5-3-1-7) and the last four measures (7-1-3-5).

5371

Exercise 5371: Melodic minor scale approach for the 4-chord progression 5371. The notation is in treble clef, 4/4 time, and consists of two staves. The first staff shows the scale in two parts: the first four measures (5-3-7-1) and the last four measures (1-3-5-7). The second staff shows the scale in two parts: the first four measures (5-3-7-1) and the last four measures (1-3-5-7).

5713

Exercise 5713: Melodic minor scale approach for the 4-chord progression 5713. The notation is in treble clef, 4/4 time, and consists of two staves. The first staff shows the scale in two parts: the first four measures (5-7-1-3) and the last four measures (3-7-1-5). The second staff shows the scale in two parts: the first four measures (5-7-1-3) and the last four measures (3-7-1-5).

5731

Exercise 5731: Melodic minor scale approach for the 4-chord progression 5731. The notation is in treble clef, 4/4 time, and consists of two staves. The first staff shows the scale in two parts: the first four measures (5-7-3-1) and the last four measures (1-3-5-7). The second staff shows the scale in two parts: the first four measures (5-7-3-1) and the last four measures (1-3-5-7).

5137

Exercise 5137 consists of two staves of music. The first staff begins with a treble clef, a key signature of one sharp (F#), and a 4/4 time signature. The melody is composed of eighth and quarter notes, with a final half note. The second staff continues the melody with similar rhythmic patterns, ending with a half note.

5173

Exercise 5173 consists of two staves of music. The first staff begins with a treble clef, a key signature of one sharp (F#), and a 4/4 time signature. The melody is composed of eighth and quarter notes, with a final half note. The second staff continues the melody with similar rhythmic patterns, ending with a half note.

5317

Exercise 5317 consists of two staves of music. The first staff begins with a treble clef, a key signature of one sharp (F#), and a 4/4 time signature. The melody is composed of eighth and quarter notes, with a final half note. The second staff continues the melody with similar rhythmic patterns, ending with a half note.

5371

Exercise 5371 consists of two staves of music. The first staff begins with a treble clef, a key signature of one sharp (F#), and a 4/4 time signature. The melody is composed of eighth and quarter notes, with a final half note. The second staff continues the melody with similar rhythmic patterns, ending with a half note.

5713

Exercise 5713 consists of two staves of music. The first staff begins with a treble clef, a key signature of one sharp (F#), and a 4/4 time signature. The melody is composed of eighth and quarter notes, with a final half note. The second staff continues the melody with similar rhythmic patterns, ending with a half note.

5731

Exercise 5731 consists of two staves of music. The first staff begins with a treble clef, a key signature of one sharp (F#), and a 4/4 time signature. The melody is composed of eighth and quarter notes, with a final half note. The second staff continues the melody with similar rhythmic patterns, ending with a half note.

5137

Two staves of musical notation for exercise 5137. The first staff contains four measures of music, and the second staff contains four measures. The music is written in treble clef and features a sequence of eighth and quarter notes with various accidentals (sharps and naturals).

5173

Two staves of musical notation for exercise 5173. The first staff contains four measures of music, and the second staff contains four measures. The music is written in treble clef and features a sequence of eighth and quarter notes with various accidentals.

5317

Two staves of musical notation for exercise 5317. The first staff contains four measures of music, and the second staff contains four measures. The music is written in treble clef and features a sequence of eighth and quarter notes with various accidentals.

5371

Two staves of musical notation for exercise 5371. The first staff contains four measures of music, and the second staff contains four measures. The music is written in treble clef and features a sequence of eighth and quarter notes with various accidentals.

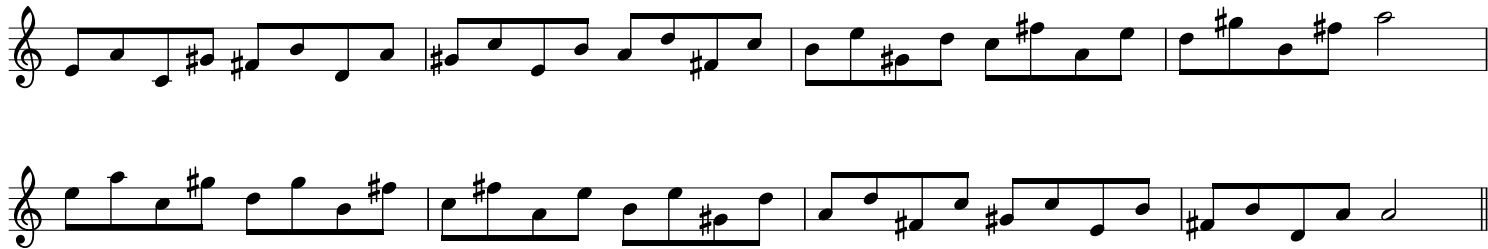
5713

Two staves of musical notation for exercise 5713. The first staff contains four measures of music, and the second staff contains four measures. The music is written in treble clef and features a sequence of eighth and quarter notes with various accidentals.

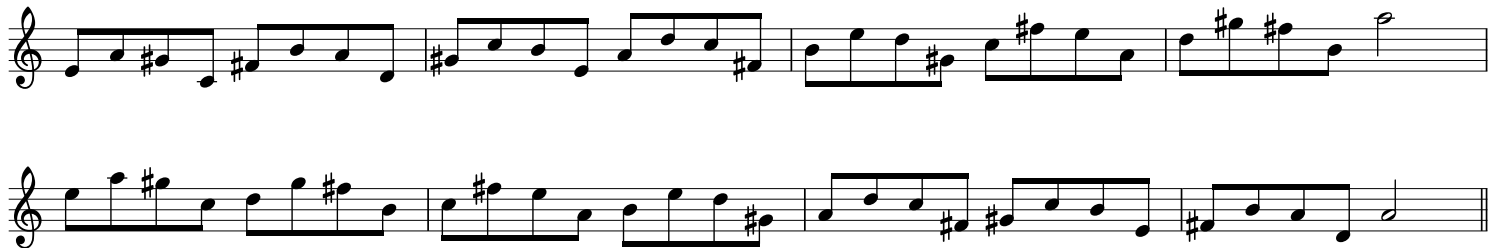
5731

Two staves of musical notation for exercise 5731. The first staff contains four measures of music, and the second staff contains four measures. The music is written in treble clef and features a sequence of eighth and quarter notes with various accidentals.

5137



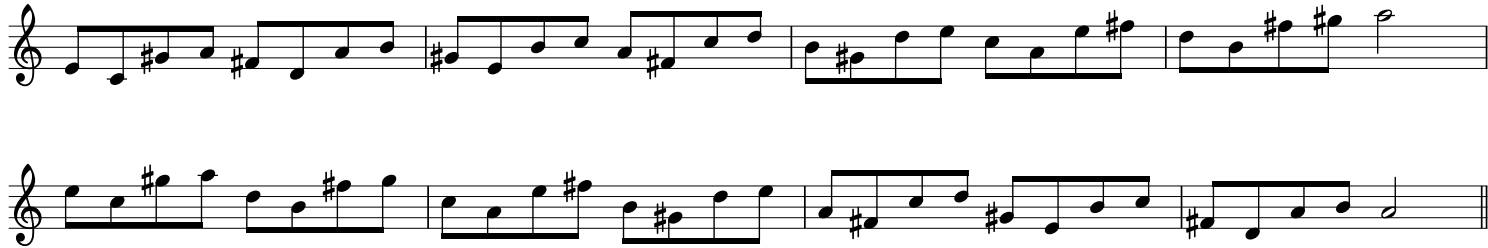
5173



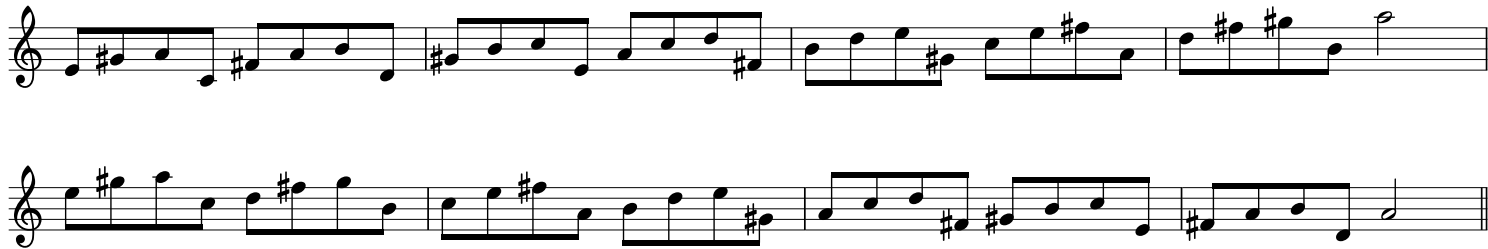
5317



5371



5713



5731

