

# 4 Chord Diatonic Scale Approach

Melodic minor Scale Up Form

5137

Exercise 5137: Two staves of bass clef music in 4/4 time. The first staff starts with a C4 quarter note, followed by D4 quarter, E4 quarter, F#4 quarter, G4 quarter, A4 quarter, B4 quarter, C5 quarter. The second staff starts with C4 quarter, B3 quarter, A3 quarter, G3 quarter, F#3 quarter, E3 quarter, D3 quarter, C3 quarter.

5173

Exercise 5173: Two staves of bass clef music in 4/4 time. The first staff starts with a C4 quarter note, followed by D4 quarter, E4 quarter, F#4 quarter, G4 quarter, A4 quarter, B4 quarter, C5 quarter. The second staff starts with C4 quarter, B3 quarter, A3 quarter, G3 quarter, F#3 quarter, E3 quarter, D3 quarter, C3 quarter.

5317

Exercise 5317: Two staves of bass clef music in 4/4 time. The first staff starts with a C4 quarter note, followed by D4 quarter, E4 quarter, F#4 quarter, G4 quarter, A4 quarter, B4 quarter, C5 quarter. The second staff starts with C4 quarter, B3 quarter, A3 quarter, G3 quarter, F#3 quarter, E3 quarter, D3 quarter, C3 quarter.

5371

Exercise 5371: Two staves of bass clef music in 4/4 time. The first staff starts with a C4 quarter note, followed by D4 quarter, E4 quarter, F#4 quarter, G4 quarter, A4 quarter, B4 quarter, C5 quarter. The second staff starts with C4 quarter, B3 quarter, A3 quarter, G3 quarter, F#3 quarter, E3 quarter, D3 quarter, C3 quarter.

5713

Exercise 5713: Two staves of bass clef music in 4/4 time. The first staff starts with a C4 quarter note, followed by D4 quarter, E4 quarter, F#4 quarter, G4 quarter, A4 quarter, B4 quarter, C5 quarter. The second staff starts with C4 quarter, B3 quarter, A3 quarter, G3 quarter, F#3 quarter, E3 quarter, D3 quarter, C3 quarter.

5731

Exercise 5731: Two staves of bass clef music in 4/4 time. The first staff starts with a C4 quarter note, followed by D4 quarter, E4 quarter, F#4 quarter, G4 quarter, A4 quarter, B4 quarter, C5 quarter. The second staff starts with C4 quarter, B3 quarter, A3 quarter, G3 quarter, F#3 quarter, E3 quarter, D3 quarter, C3 quarter.

5137

Exercise 5137 consists of two staves of music. The first staff begins with a bass clef, a key signature of one flat (B-flat), and a common time signature. The melody is composed of eighth and quarter notes, featuring a chromatic scale in the first measure and various intervals throughout. The second staff continues the melody, ending with a double bar line.

5173

Exercise 5173 consists of two staves of music. The first staff begins with a bass clef, a key signature of one flat (B-flat), and a common time signature. The melody is composed of eighth and quarter notes, featuring a chromatic scale in the first measure and various intervals throughout. The second staff continues the melody, ending with a double bar line.

5317

Exercise 5317 consists of two staves of music. The first staff begins with a bass clef, a key signature of one flat (B-flat), and a common time signature. The melody is composed of eighth and quarter notes, featuring a chromatic scale in the first measure and various intervals throughout. The second staff continues the melody, ending with a double bar line.

5371

Exercise 5371 consists of two staves of music. The first staff begins with a bass clef, a key signature of one flat (B-flat), and a common time signature. The melody is composed of eighth and quarter notes, featuring a chromatic scale in the first measure and various intervals throughout. The second staff continues the melody, ending with a double bar line.

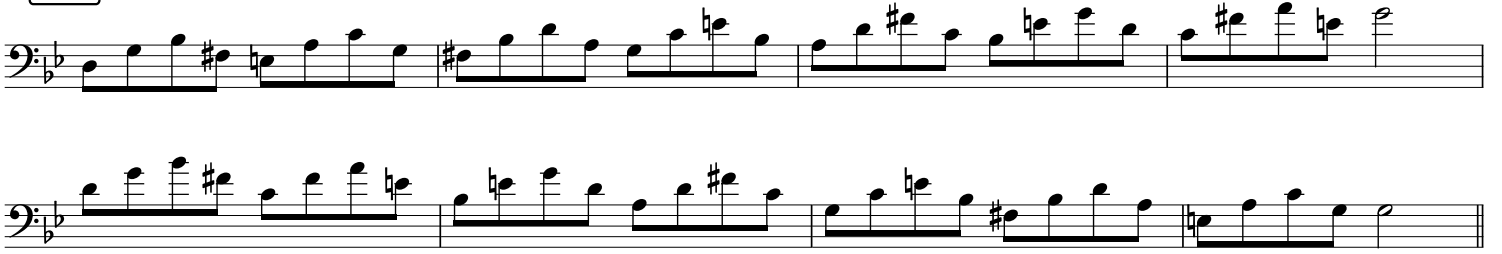
5713

Exercise 5713 consists of two staves of music. The first staff begins with a bass clef, a key signature of one flat (B-flat), and a common time signature. The melody is composed of eighth and quarter notes, featuring a chromatic scale in the first measure and various intervals throughout. The second staff continues the melody, ending with a double bar line.

5731

Exercise 5731 consists of two staves of music. The first staff begins with a bass clef, a key signature of one flat (B-flat), and a common time signature. The melody is composed of eighth and quarter notes, featuring a chromatic scale in the first measure and various intervals throughout. The second staff continues the melody, ending with a double bar line.

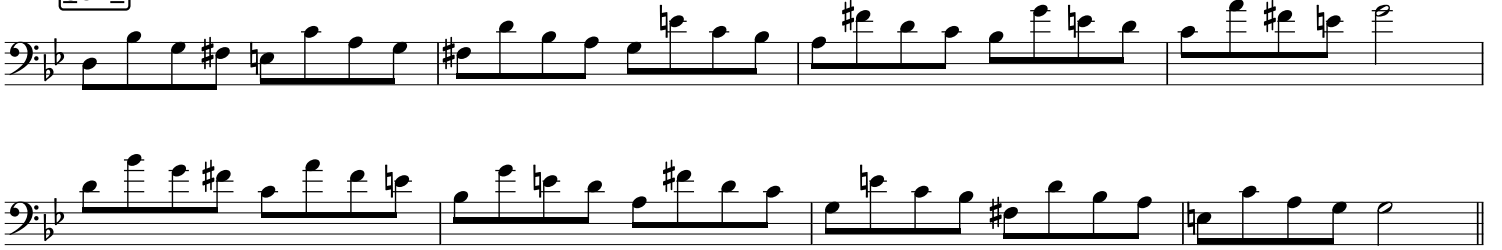
5137



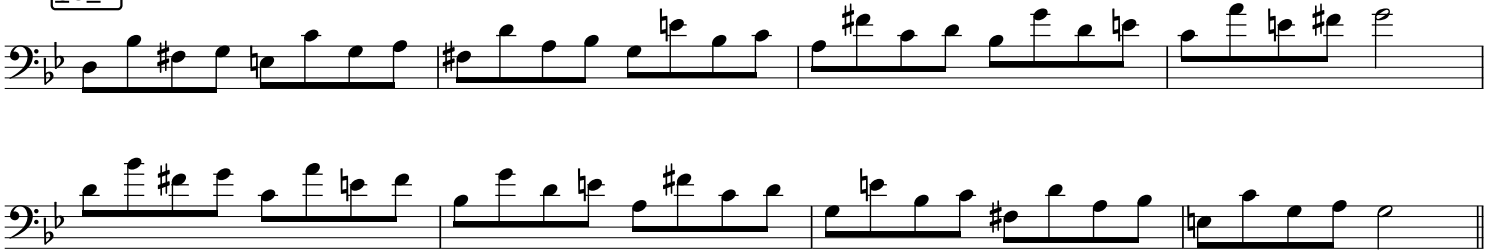
5173



5317



5371



5713



5731



5137

Two staves of musical notation for exercise 5137. The first staff begins with a bass clef, a key signature of one flat (B-flat), and a common time signature. The melody consists of eighth and quarter notes with various accidentals (sharps and naturals). The second staff continues the melody, ending with a double bar line.

5173

Two staves of musical notation for exercise 5173. The notation is similar to exercise 5137, featuring a bass clef, one flat key signature, and common time. The melody is composed of eighth and quarter notes with accidentals.

5317

Two staves of musical notation for exercise 5317. The notation follows the same format as the previous exercises, with a bass clef, one flat key signature, and common time. The melody uses eighth and quarter notes with accidentals.

5371

Two staves of musical notation for exercise 5371. The notation is consistent with the previous exercises, featuring a bass clef, one flat key signature, and common time. The melody is written with eighth and quarter notes and accidentals.

5713

Two staves of musical notation for exercise 5713. The notation continues the pattern, with a bass clef, one flat key signature, and common time. The melody consists of eighth and quarter notes with accidentals.

5731

Two staves of musical notation for exercise 5731. The notation is consistent with the previous exercises, featuring a bass clef, one flat key signature, and common time. The melody is written with eighth and quarter notes and accidentals.