

4 Chord Diatonic Scale Approach

Major Scale

1357

Exercise 1357: A 4-measure exercise in 4/4 time, bass clef. The first staff shows the ascending scale: G2, A2, B2, C3, D3, E3, F3, G3. The second staff shows the descending scale: F3, E3, D3, C3, B2, A2, G2, F2.

1375

Exercise 1375: A 4-measure exercise in 4/4 time, bass clef. The first staff shows the ascending scale: G2, A2, B2, C3, D3, E3, F3, G3. The second staff shows the descending scale: F3, E3, D3, C3, B2, A2, G2, F2.

1537

Exercise 1537: A 4-measure exercise in 4/4 time, bass clef. The first staff shows the ascending scale: G2, A2, B2, C3, D3, E3, F3, G3. The second staff shows the descending scale: F3, E3, D3, C3, B2, A2, G2, F2.

1573

Exercise 1573: A 4-measure exercise in 4/4 time, bass clef. The first staff shows the ascending scale: G2, A2, B2, C3, D3, E3, F3, G3. The second staff shows the descending scale: F3, E3, D3, C3, B2, A2, G2, F2.

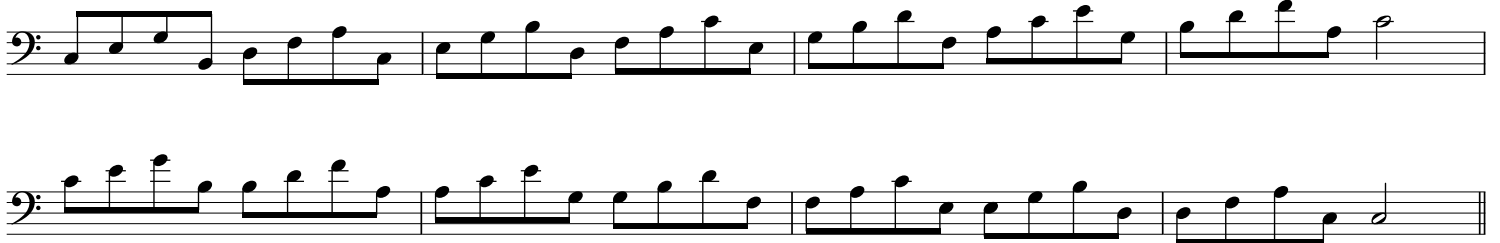
1735

Exercise 1735: A 4-measure exercise in 4/4 time, bass clef. The first staff shows the ascending scale: G2, A2, B2, C3, D3, E3, F3, G3. The second staff shows the descending scale: F3, E3, D3, C3, B2, A2, G2, F2.

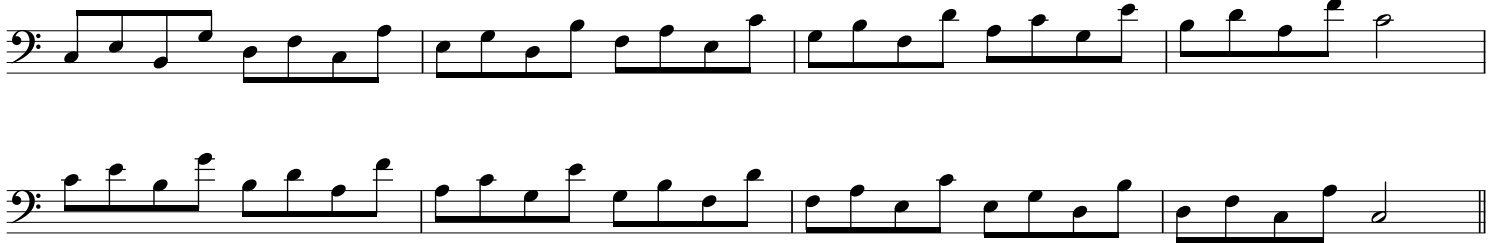
1753

Exercise 1753: A 4-measure exercise in 4/4 time, bass clef. The first staff shows the ascending scale: G2, A2, B2, C3, D3, E3, F3, G3. The second staff shows the descending scale: F3, E3, D3, C3, B2, A2, G2, F2.

1357



1375



1537



1573



1735



1753



1357

Exercise 1357 consists of two staves of music in bass clef. The first staff contains four measures of music, and the second staff contains four measures. The notes are: Staff 1: G2, A2, B2, C3 | D3, E3, F3, G3 | A3, B3, C4, D4 | E4, F4, G4, A4. Staff 2: B4, C5, D5, E5 | F5, G5, A5, B5 | C6, D6, E6, F6 | G6, A6, B6, C7.

1375

Exercise 1375 consists of two staves of music in bass clef. The first staff contains four measures of music, and the second staff contains four measures. The notes are: Staff 1: G2, A2, B2, C3 | D3, E3, F3, G3 | A3, B3, C4, D4 | E4, F4, G4, A4. Staff 2: B4, C5, D5, E5 | F5, G5, A5, B5 | C6, D6, E6, F6 | G6, A6, B6, C7.

1537

Exercise 1537 consists of two staves of music in bass clef. The first staff contains four measures of music, and the second staff contains four measures. The notes are: Staff 1: G2, A2, B2, C3 | D3, E3, F3, G3 | A3, B3, C4, D4 | E4, F4, G4, A4. Staff 2: B4, C5, D5, E5 | F5, G5, A5, B5 | C6, D6, E6, F6 | G6, A6, B6, C7.

1573

Exercise 1573 consists of two staves of music in bass clef. The first staff contains four measures of music, and the second staff contains four measures. The notes are: Staff 1: G2, A2, B2, C3 | D3, E3, F3, G3 | A3, B3, C4, D4 | E4, F4, G4, A4. Staff 2: B4, C5, D5, E5 | F5, G5, A5, B5 | C6, D6, E6, F6 | G6, A6, B6, C7.

1735

Exercise 1735 consists of two staves of music in bass clef. The first staff contains four measures of music, and the second staff contains four measures. The notes are: Staff 1: G2, A2, B2, C3 | D3, E3, F3, G3 | A3, B3, C4, D4 | E4, F4, G4, A4. Staff 2: B4, C5, D5, E5 | F5, G5, A5, B5 | C6, D6, E6, F6 | G6, A6, B6, C7.

1753

Exercise 1753 consists of two staves of music in bass clef. The first staff contains four measures of music, and the second staff contains four measures. The notes are: Staff 1: G2, A2, B2, C3 | D3, E3, F3, G3 | A3, B3, C4, D4 | E4, F4, G4, A4. Staff 2: B4, C5, D5, E5 | F5, G5, A5, B5 | C6, D6, E6, F6 | G6, A6, B6, C7.

1357

Exercise 1357 consists of two staves of music in bass clef. The first staff contains four measures of music, starting with a quarter rest followed by eighth notes, and ending with a half note. The second staff contains four measures of music, starting with a quarter rest followed by eighth notes, and ending with a half note.

1375

Exercise 1375 consists of two staves of music in bass clef. The first staff contains four measures of music, starting with a quarter rest followed by eighth notes, and ending with a half note. The second staff contains four measures of music, starting with a quarter rest followed by eighth notes, and ending with a half note.

1537

Exercise 1537 consists of two staves of music in bass clef. The first staff contains four measures of music, starting with a quarter rest followed by eighth notes, and ending with a half note. The second staff contains four measures of music, starting with a quarter rest followed by eighth notes, and ending with a half note.

1573

Exercise 1573 consists of two staves of music in bass clef. The first staff contains four measures of music, starting with a quarter rest followed by eighth notes, and ending with a half note. The second staff contains four measures of music, starting with a quarter rest followed by eighth notes, and ending with a half note.

1735

Exercise 1735 consists of two staves of music in bass clef. The first staff contains four measures of music, starting with a quarter rest followed by eighth notes, and ending with a half note. The second staff contains four measures of music, starting with a quarter rest followed by eighth notes, and ending with a half note.

1753

Exercise 1753 consists of two staves of music in bass clef. The first staff contains four measures of music, starting with a quarter rest followed by eighth notes, and ending with a half note. The second staff contains four measures of music, starting with a quarter rest followed by eighth notes, and ending with a half note.