

4 Chord Diatonic Scale Approach

Major Scale

3157

Exercise 3157: A bass line in 4/4 time, key of D major. The first staff contains the ascending scale: D4, E4, F#4, G4, A4, B4, C5, D5. The second staff contains the descending scale: D5, C5, B4, A4, G4, F#4, E4, D4. The piece concludes with a double bar line.

3175

Exercise 3175: A bass line in 4/4 time, key of D major. The first staff contains the ascending scale: D4, E4, F#4, G4, A4, B4, C5, D5. The second staff contains the descending scale: D5, C5, B4, A4, G4, F#4, E4, D4. The piece concludes with a double bar line.

3517

Exercise 3517: A bass line in 4/4 time, key of D major. The first staff contains the ascending scale: D4, E4, F#4, G4, A4, B4, C5, D5. The second staff contains the descending scale: D5, C5, B4, A4, G4, F#4, E4, D4. The piece concludes with a double bar line.

3571

Exercise 3571: A bass line in 4/4 time, key of D major. The first staff contains the ascending scale: D4, E4, F#4, G4, A4, B4, C5, D5. The second staff contains the descending scale: D5, C5, B4, A4, G4, F#4, E4, D4. The piece concludes with a double bar line.

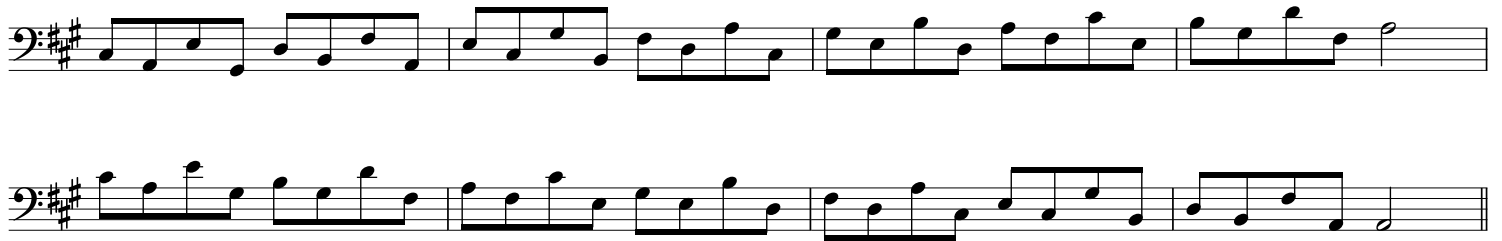
3715

Exercise 3715: A bass line in 4/4 time, key of D major. The first staff contains the ascending scale: D4, E4, F#4, G4, A4, B4, C5, D5. The second staff contains the descending scale: D5, C5, B4, A4, G4, F#4, E4, D4. The piece concludes with a double bar line.

3751

Exercise 3751: A bass line in 4/4 time, key of D major. The first staff contains the ascending scale: D4, E4, F#4, G4, A4, B4, C5, D5. The second staff contains the descending scale: D5, C5, B4, A4, G4, F#4, E4, D4. The piece concludes with a double bar line.

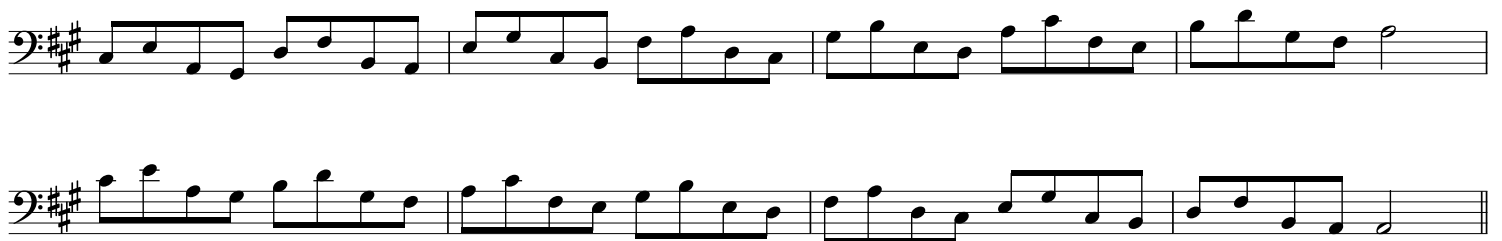
315Z



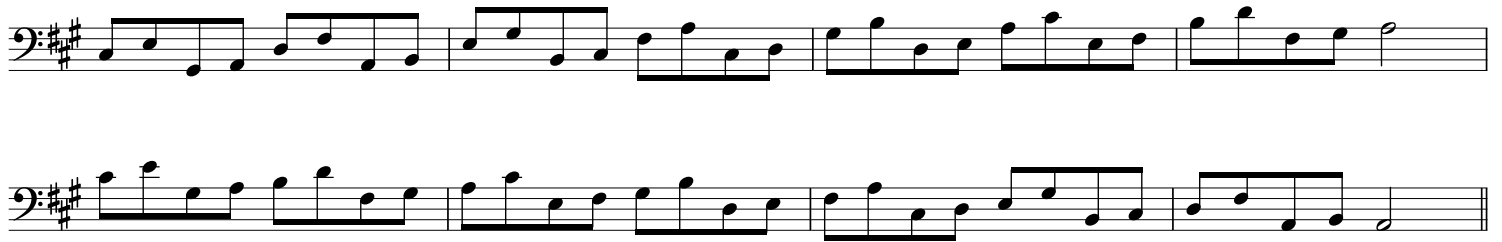
3175



351Z



3571



3715



3751



3157

Two staves of music in bass clef with a key signature of two sharps (F# and C#). The first staff contains measures 1-4, and the second staff contains measures 5-8. The melody consists of eighth and quarter notes.

3175

Two staves of music in bass clef with a key signature of two sharps (F# and C#). The first staff contains measures 1-4, and the second staff contains measures 5-8. The melody consists of eighth and quarter notes.

3517

Two staves of music in bass clef with a key signature of two sharps (F# and C#). The first staff contains measures 1-4, and the second staff contains measures 5-8. The melody consists of eighth and quarter notes.

3571

Two staves of music in bass clef with a key signature of two sharps (F# and C#). The first staff contains measures 1-4, and the second staff contains measures 5-8. The melody consists of eighth and quarter notes.

3715

Two staves of music in bass clef with a key signature of two sharps (F# and C#). The first staff contains measures 1-4, and the second staff contains measures 5-8. The melody consists of eighth and quarter notes.

3751

Two staves of music in bass clef with a key signature of two sharps (F# and C#). The first staff contains measures 1-4, and the second staff contains measures 5-8. The melody consists of eighth and quarter notes.

3157

Two staves of musical notation in bass clef with a key signature of two sharps (F# and C#). The first staff contains four measures of eighth-note patterns. The second staff contains four measures of eighth-note patterns, ending with a double bar line.

3175

Two staves of musical notation in bass clef with a key signature of two sharps (F# and C#). The first staff contains four measures of eighth-note patterns. The second staff contains four measures of eighth-note patterns, ending with a double bar line.

3517

Two staves of musical notation in bass clef with a key signature of two sharps (F# and C#). The first staff contains four measures of eighth-note patterns. The second staff contains four measures of eighth-note patterns, ending with a double bar line.

3571

Two staves of musical notation in bass clef with a key signature of two sharps (F# and C#). The first staff contains four measures of eighth-note patterns. The second staff contains four measures of eighth-note patterns, ending with a double bar line.

3715

Two staves of musical notation in bass clef with a key signature of two sharps (F# and C#). The first staff contains four measures of eighth-note patterns. The second staff contains four measures of eighth-note patterns, ending with a double bar line.

3751

Two staves of musical notation in bass clef with a key signature of two sharps (F# and C#). The first staff contains four measures of eighth-note patterns. The second staff contains four measures of eighth-note patterns, ending with a double bar line.