

4 Chord Diatonic Scale Approach

Harmonic minor Scale

5137

Exercise 5137: A major scale approach using four chords (A, D, E, A) in a 4/4 time signature. The first staff shows the ascending scale: A4 (quarter), D4 (quarter), E4 (quarter), A4 (quarter), G4 (quarter), F#4 (quarter), E4 (quarter), D4 (quarter), C#4 (quarter), B3 (quarter), A3 (half). The second staff shows the descending scale: A3 (quarter), B3 (quarter), C#4 (quarter), D4 (quarter), E4 (quarter), F#4 (quarter), G4 (quarter), A4 (quarter), G4 (quarter), F#4 (quarter), E4 (quarter), D4 (quarter), C#4 (quarter), B3 (quarter), A3 (half).

5173

Exercise 5173: A major scale approach using four chords (A, D, E, A) in a 4/4 time signature. The first staff shows the ascending scale: A4 (quarter), D4 (quarter), E4 (quarter), A4 (quarter), G4 (quarter), F#4 (quarter), E4 (quarter), D4 (quarter), C#4 (quarter), B3 (quarter), A3 (half). The second staff shows the descending scale: A3 (quarter), B3 (quarter), C#4 (quarter), D4 (quarter), E4 (quarter), F#4 (quarter), G4 (quarter), A4 (quarter), G4 (quarter), F#4 (quarter), E4 (quarter), D4 (quarter), C#4 (quarter), B3 (quarter), A3 (half).

5317

Exercise 5317: A major scale approach using four chords (A, D, E, A) in a 4/4 time signature. The first staff shows the ascending scale: A4 (quarter), D4 (quarter), E4 (quarter), A4 (quarter), G4 (quarter), F#4 (quarter), E4 (quarter), D4 (quarter), C#4 (quarter), B3 (quarter), A3 (half). The second staff shows the descending scale: A3 (quarter), B3 (quarter), C#4 (quarter), D4 (quarter), E4 (quarter), F#4 (quarter), G4 (quarter), A4 (quarter), G4 (quarter), F#4 (quarter), E4 (quarter), D4 (quarter), C#4 (quarter), B3 (quarter), A3 (half).

5371

Exercise 5371: A major scale approach using four chords (A, D, E, A) in a 4/4 time signature. The first staff shows the ascending scale: A4 (quarter), D4 (quarter), E4 (quarter), A4 (quarter), G4 (quarter), F#4 (quarter), E4 (quarter), D4 (quarter), C#4 (quarter), B3 (quarter), A3 (half). The second staff shows the descending scale: A3 (quarter), B3 (quarter), C#4 (quarter), D4 (quarter), E4 (quarter), F#4 (quarter), G4 (quarter), A4 (quarter), G4 (quarter), F#4 (quarter), E4 (quarter), D4 (quarter), C#4 (quarter), B3 (quarter), A3 (half).

5713

Exercise 5713: A major scale approach using four chords (A, D, E, A) in a 4/4 time signature. The first staff shows the ascending scale: A4 (quarter), D4 (quarter), E4 (quarter), A4 (quarter), G4 (quarter), F#4 (quarter), E4 (quarter), D4 (quarter), C#4 (quarter), B3 (quarter), A3 (half). The second staff shows the descending scale: A3 (quarter), B3 (quarter), C#4 (quarter), D4 (quarter), E4 (quarter), F#4 (quarter), G4 (quarter), A4 (quarter), G4 (quarter), F#4 (quarter), E4 (quarter), D4 (quarter), C#4 (quarter), B3 (quarter), A3 (half).

5731

Exercise 5731: A major scale approach using four chords (A, D, E, A) in a 4/4 time signature. The first staff shows the ascending scale: A4 (quarter), D4 (quarter), E4 (quarter), A4 (quarter), G4 (quarter), F#4 (quarter), E4 (quarter), D4 (quarter), C#4 (quarter), B3 (quarter), A3 (half). The second staff shows the descending scale: A3 (quarter), B3 (quarter), C#4 (quarter), D4 (quarter), E4 (quarter), F#4 (quarter), G4 (quarter), A4 (quarter), G4 (quarter), F#4 (quarter), E4 (quarter), D4 (quarter), C#4 (quarter), B3 (quarter), A3 (half).

5137

Two staves of musical notation for exercise 5137. The key signature is two sharps (F# and C#), and the time signature is 4/4. The first staff contains five measures of music, and the second staff contains five measures. The notation consists of eighth and quarter notes with various accidentals.

5173

Two staves of musical notation for exercise 5173. The key signature is two sharps (F# and C#), and the time signature is 4/4. The first staff contains five measures of music, and the second staff contains five measures. The notation consists of eighth and quarter notes with various accidentals.

5317

Two staves of musical notation for exercise 5317. The key signature is two sharps (F# and C#), and the time signature is 4/4. The first staff contains five measures of music, and the second staff contains five measures. The notation consists of eighth and quarter notes with various accidentals.

5371

Two staves of musical notation for exercise 5371. The key signature is two sharps (F# and C#), and the time signature is 4/4. The first staff contains five measures of music, and the second staff contains five measures. The notation consists of eighth and quarter notes with various accidentals.

5713

Two staves of musical notation for exercise 5713. The key signature is two sharps (F# and C#), and the time signature is 4/4. The first staff contains five measures of music, and the second staff contains five measures. The notation consists of eighth and quarter notes with various accidentals.

5731

Two staves of musical notation for exercise 5731. The key signature is two sharps (F# and C#), and the time signature is 4/4. The first staff contains five measures of music, and the second staff contains five measures. The notation consists of eighth and quarter notes with various accidentals.

5137

5173

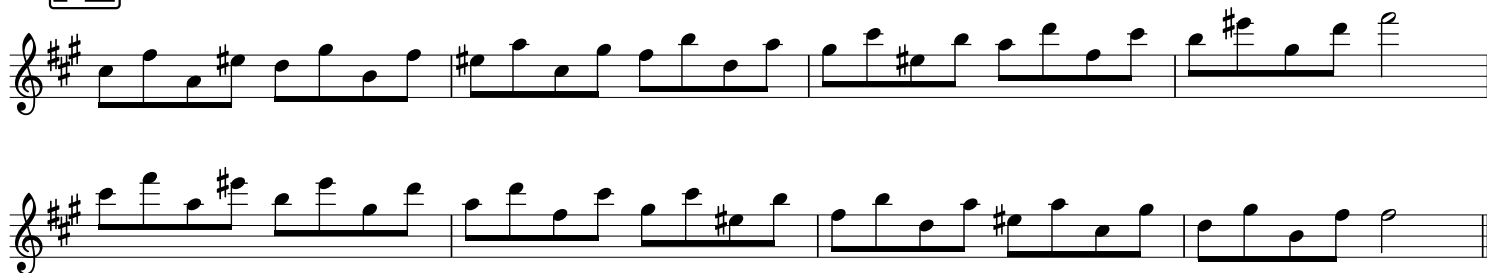
5317

5371

5713

5731

5137



5173



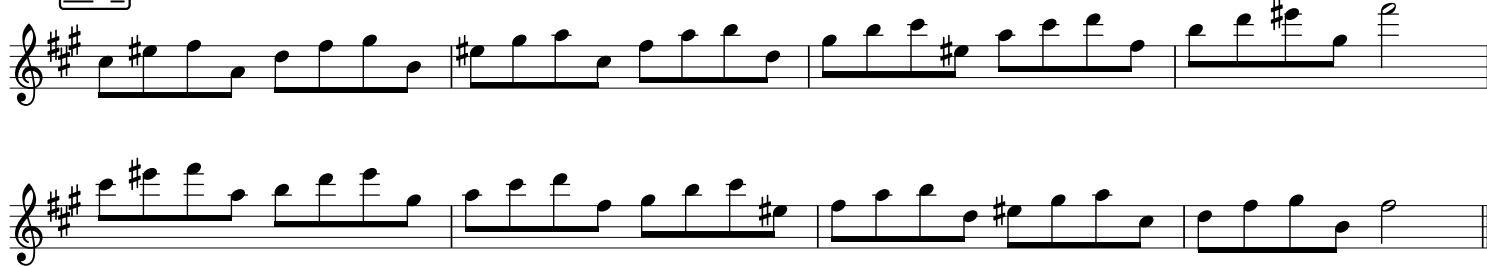
5317



5371



5713



5731

