

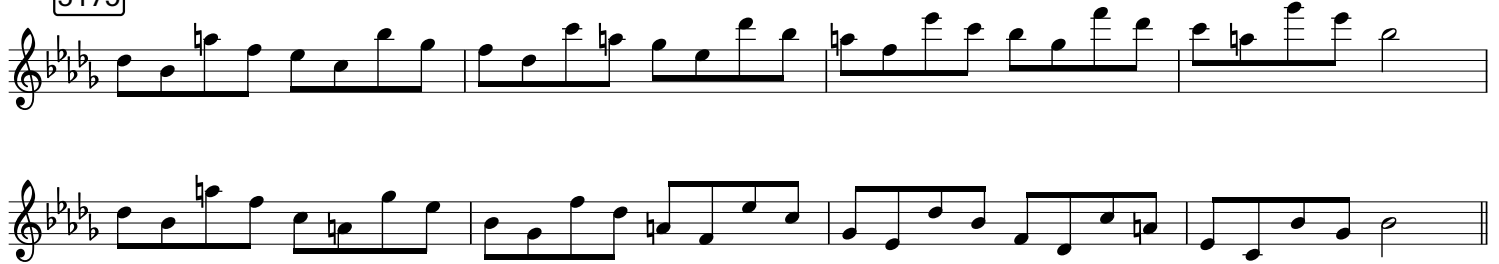
4 Chord Diatonic Scale Approach

Harmonic minor Scale

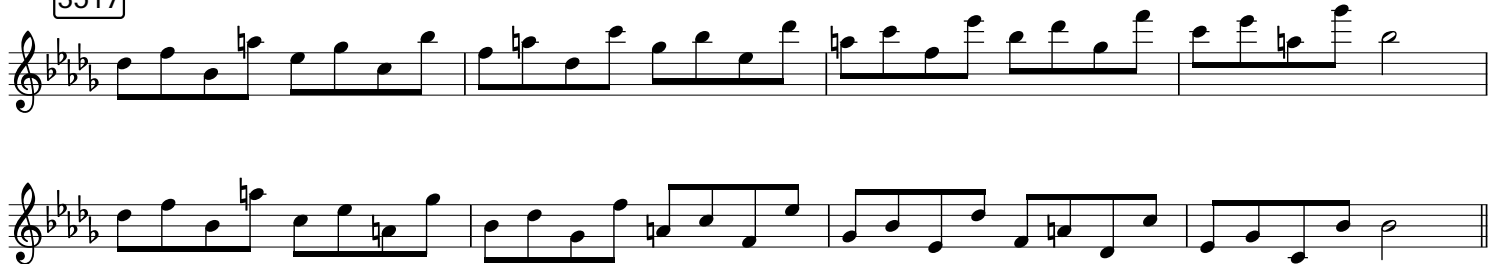
3157



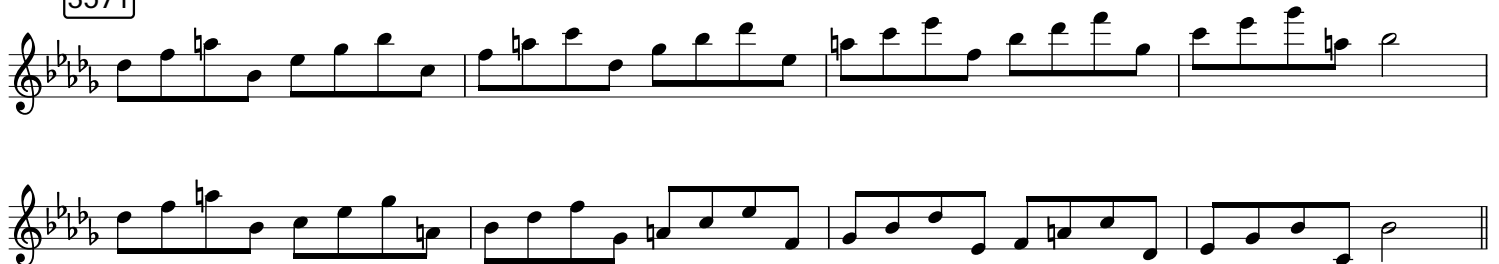
3175



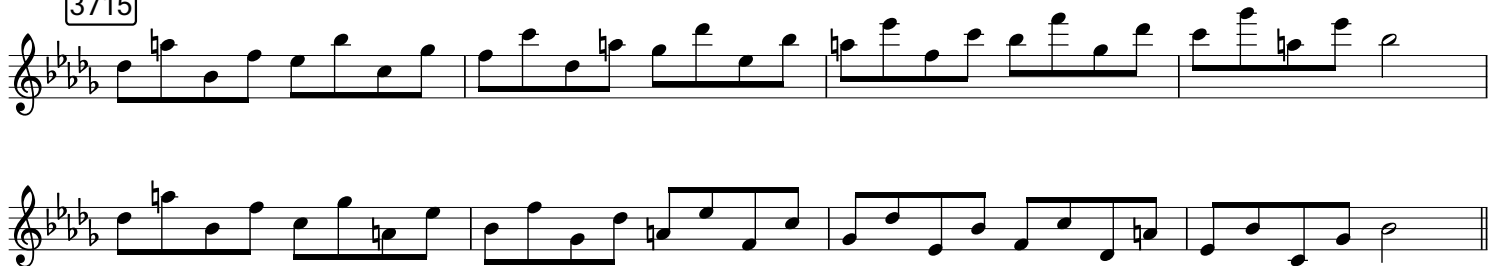
3517



3571



3715



3751



3157

Two staves of musical notation for exercise 3157. The first staff contains four measures of music, and the second staff contains four measures. The key signature is B-flat major (two flats), and the time signature is 4/4. The notation includes quarter notes, eighth notes, and a half note.

3175

Two staves of musical notation for exercise 3175. The first staff contains four measures of music, and the second staff contains four measures. The key signature is B-flat major (two flats), and the time signature is 4/4. The notation includes quarter notes, eighth notes, and a half note.

3517

Two staves of musical notation for exercise 3517. The first staff contains four measures of music, and the second staff contains four measures. The key signature is B-flat major (two flats), and the time signature is 4/4. The notation includes quarter notes, eighth notes, and a half note.

3571

Two staves of musical notation for exercise 3571. The first staff contains four measures of music, and the second staff contains four measures. The key signature is B-flat major (two flats), and the time signature is 4/4. The notation includes quarter notes, eighth notes, and a half note.

3715

Two staves of musical notation for exercise 3715. The first staff contains four measures of music, and the second staff contains four measures. The key signature is B-flat major (two flats), and the time signature is 4/4. The notation includes quarter notes, eighth notes, and a half note.

3751

Two staves of musical notation for exercise 3751. The first staff contains four measures of music, and the second staff contains four measures. The key signature is B-flat major (two flats), and the time signature is 4/4. The notation includes quarter notes, eighth notes, and a half note.

3157

Two staves of musical notation for exercise 3157. The first staff contains measures 1-4, and the second staff contains measures 5-8. The key signature is three flats (B-flat, E-flat, A-flat) and the time signature is 4/4. The melody consists of eighth and quarter notes.

3175

Two staves of musical notation for exercise 3175. The first staff contains measures 1-4, and the second staff contains measures 5-8. The key signature is three flats (B-flat, E-flat, A-flat) and the time signature is 4/4. The melody consists of eighth and quarter notes.

3517

Two staves of musical notation for exercise 3517. The first staff contains measures 1-4, and the second staff contains measures 5-8. The key signature is three flats (B-flat, E-flat, A-flat) and the time signature is 4/4. The melody consists of eighth and quarter notes.

3571

Two staves of musical notation for exercise 3571. The first staff contains measures 1-4, and the second staff contains measures 5-8. The key signature is three flats (B-flat, E-flat, A-flat) and the time signature is 4/4. The melody consists of eighth and quarter notes.

3715

Two staves of musical notation for exercise 3715. The first staff contains measures 1-4, and the second staff contains measures 5-8. The key signature is three flats (B-flat, E-flat, A-flat) and the time signature is 4/4. The melody consists of eighth and quarter notes.

3751

Two staves of musical notation for exercise 3751. The first staff contains measures 1-4, and the second staff contains measures 5-8. The key signature is three flats (B-flat, E-flat, A-flat) and the time signature is 4/4. The melody consists of eighth and quarter notes.

3157

Two staves of musical notation for exercise 3157. The first staff contains measures 1 and 2, and the second staff contains measures 3 and 4. The key signature is three flats (B-flat, E-flat, A-flat) and the time signature is 4/4. The melody consists of eighth and quarter notes.

3175

Two staves of musical notation for exercise 3175. The first staff contains measures 1 and 2, and the second staff contains measures 3 and 4. The key signature is three flats and the time signature is 4/4. The melody consists of eighth and quarter notes.

3517

Two staves of musical notation for exercise 3517. The first staff contains measures 1 and 2, and the second staff contains measures 3 and 4. The key signature is three flats and the time signature is 4/4. The melody consists of eighth and quarter notes.

3571

Two staves of musical notation for exercise 3571. The first staff contains measures 1 and 2, and the second staff contains measures 3 and 4. The key signature is three flats and the time signature is 4/4. The melody consists of eighth and quarter notes.

3715

Two staves of musical notation for exercise 3715. The first staff contains measures 1 and 2, and the second staff contains measures 3 and 4. The key signature is three flats and the time signature is 4/4. The melody consists of eighth and quarter notes.

3751

Two staves of musical notation for exercise 3751. The first staff contains measures 1 and 2, and the second staff contains measures 3 and 4. The key signature is three flats and the time signature is 4/4. The melody consists of eighth and quarter notes.