

4 Chord Diatonic Scale Approach

Major Scale

1357

Exercise 1357: A 4-chord diatonic scale approach in B-flat major (two flats). The exercise is written in 4/4 time and consists of two staves. The first staff contains the first four measures, and the second staff contains the next four measures. The notes are: B-flat, C, D, E-flat, F, G, A, B-flat.

1375

Exercise 1375: A 4-chord diatonic scale approach in B-flat major (two flats). The exercise is written in 4/4 time and consists of two staves. The first staff contains the first four measures, and the second staff contains the next four measures. The notes are: B-flat, C, D, E-flat, F, G, A, B-flat.

1537

Exercise 1537: A 4-chord diatonic scale approach in B-flat major (two flats). The exercise is written in 4/4 time and consists of two staves. The first staff contains the first four measures, and the second staff contains the next four measures. The notes are: B-flat, C, D, E-flat, F, G, A, B-flat.

1573

Exercise 1573: A 4-chord diatonic scale approach in B-flat major (two flats). The exercise is written in 4/4 time and consists of two staves. The first staff contains the first four measures, and the second staff contains the next four measures. The notes are: B-flat, C, D, E-flat, F, G, A, B-flat.

1735

Exercise 1735: A 4-chord diatonic scale approach in B-flat major (two flats). The exercise is written in 4/4 time and consists of two staves. The first staff contains the first four measures, and the second staff contains the next four measures. The notes are: B-flat, C, D, E-flat, F, G, A, B-flat.

1753

Exercise 1753: A 4-chord diatonic scale approach in B-flat major (two flats). The exercise is written in 4/4 time and consists of two staves. The first staff contains the first four measures, and the second staff contains the next four measures. The notes are: B-flat, C, D, E-flat, F, G, A, B-flat.

1357

Exercise 1357 consists of two staves of music in B-flat major. The first staff begins with a treble clef, a key signature of two flats (B-flat and E-flat), and a common time signature. It contains four measures of music: the first two measures are eighth-note patterns (B-flat, A, G, F, E, D, C, B-flat), and the last two measures are quarter-note patterns (B-flat, A, G, F, E, D, C, B-flat). The second staff continues the exercise with four more measures, maintaining the same rhythmic and melodic structure.

1375

Exercise 1375 consists of two staves of music in B-flat major. The first staff begins with a treble clef, a key signature of two flats (B-flat and E-flat), and a common time signature. It contains four measures of music: the first two measures are eighth-note patterns (B-flat, A, G, F, E, D, C, B-flat), and the last two measures are quarter-note patterns (B-flat, A, G, F, E, D, C, B-flat). The second staff continues the exercise with four more measures, maintaining the same rhythmic and melodic structure.

1537

Exercise 1537 consists of two staves of music in B-flat major. The first staff begins with a treble clef, a key signature of two flats (B-flat and E-flat), and a common time signature. It contains four measures of music: the first two measures are eighth-note patterns (B-flat, A, G, F, E, D, C, B-flat), and the last two measures are quarter-note patterns (B-flat, A, G, F, E, D, C, B-flat). The second staff continues the exercise with four more measures, maintaining the same rhythmic and melodic structure.

1573

Exercise 1573 consists of two staves of music in B-flat major. The first staff begins with a treble clef, a key signature of two flats (B-flat and E-flat), and a common time signature. It contains four measures of music: the first two measures are eighth-note patterns (B-flat, A, G, F, E, D, C, B-flat), and the last two measures are quarter-note patterns (B-flat, A, G, F, E, D, C, B-flat). The second staff continues the exercise with four more measures, maintaining the same rhythmic and melodic structure.

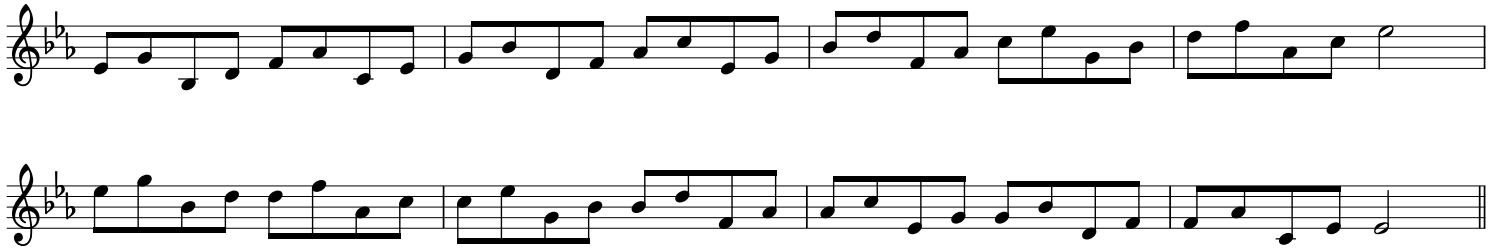
1735

Exercise 1735 consists of two staves of music in B-flat major. The first staff begins with a treble clef, a key signature of two flats (B-flat and E-flat), and a common time signature. It contains four measures of music: the first two measures are eighth-note patterns (B-flat, A, G, F, E, D, C, B-flat), and the last two measures are quarter-note patterns (B-flat, A, G, F, E, D, C, B-flat). The second staff continues the exercise with four more measures, maintaining the same rhythmic and melodic structure.

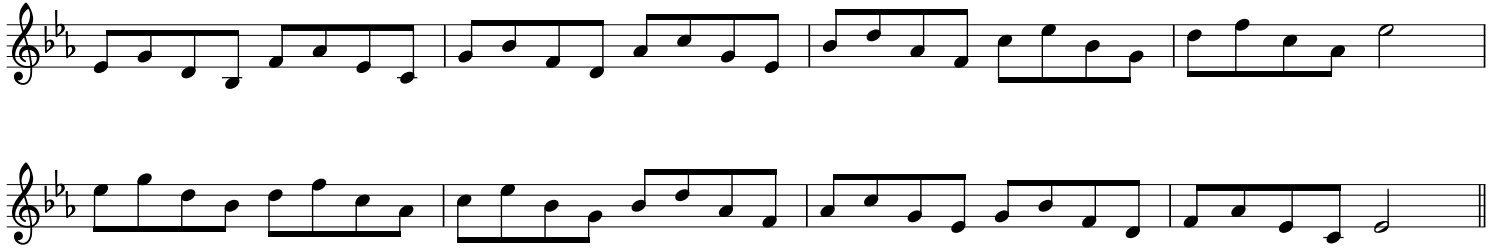
1753

Exercise 1753 consists of two staves of music in B-flat major. The first staff begins with a treble clef, a key signature of two flats (B-flat and E-flat), and a common time signature. It contains four measures of music: the first two measures are eighth-note patterns (B-flat, A, G, F, E, D, C, B-flat), and the last two measures are quarter-note patterns (B-flat, A, G, F, E, D, C, B-flat). The second staff continues the exercise with four more measures, maintaining the same rhythmic and melodic structure.

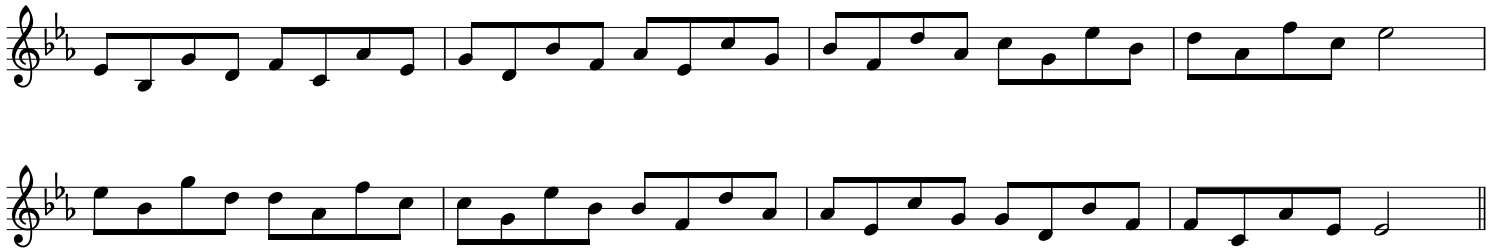
1357



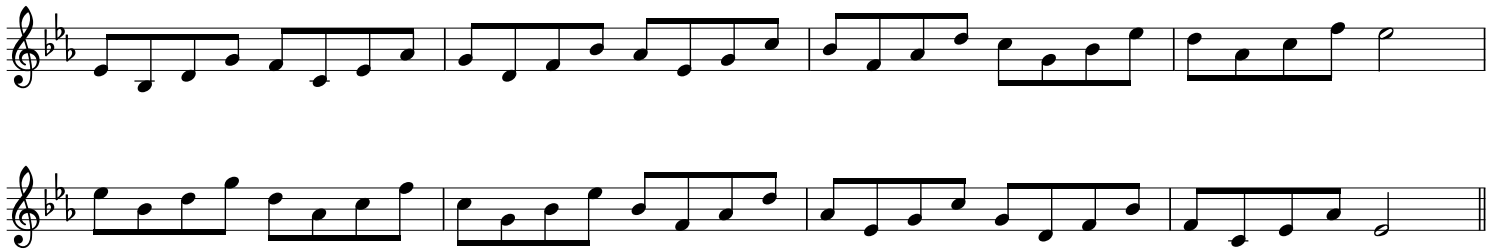
1375



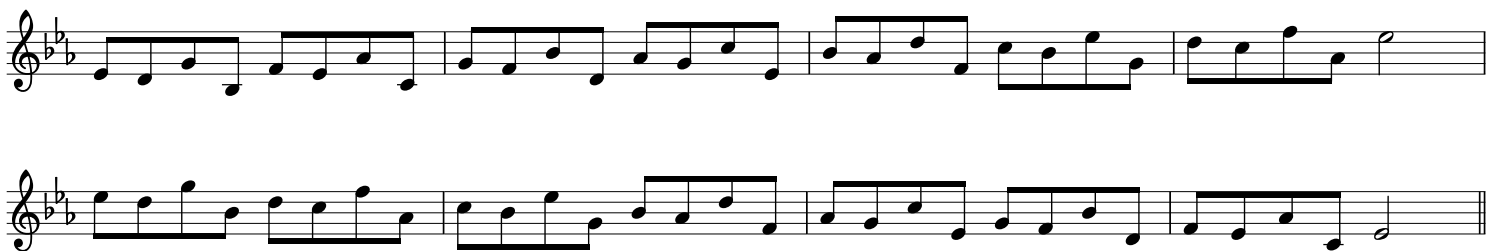
1537



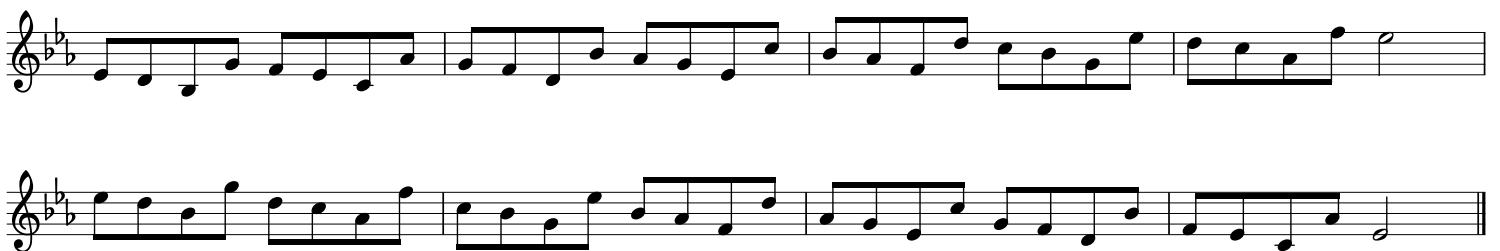
1573



1735



1753



1357

Two staves of musical notation in B-flat major. The first staff contains measures 1357-1364, and the second staff contains measures 1365-1374. The music consists of eighth-note patterns.

1375

Two staves of musical notation in B-flat major. The first staff contains measures 1375-1382, and the second staff contains measures 1383-1402. The music consists of eighth-note patterns.

1537

Two staves of musical notation in B-flat major. The first staff contains measures 1537-1544, and the second staff contains measures 1545-1564. The music consists of eighth-note patterns.

1573

Two staves of musical notation in B-flat major. The first staff contains measures 1573-1580, and the second staff contains measures 1581-1600. The music consists of eighth-note patterns.

1735

Two staves of musical notation in B-flat major. The first staff contains measures 1735-1742, and the second staff contains measures 1743-1762. The music consists of eighth-note patterns.

1753

Two staves of musical notation in B-flat major. The first staff contains measures 1753-1760, and the second staff contains measures 1761-1780. The music consists of eighth-note patterns.