

4 Chord Diatonic Scale Approach

Major Scale

5137

Exercise 5137: A 4-chord diatonic scale approach in B-flat major (two flats). The exercise is written in 4/4 time and consists of two staves. The first staff contains the first four measures, and the second staff contains the next four measures. The notes are: B-flat, C, D, E-flat, F, G, A, B-flat.

5173

Exercise 5173: A 4-chord diatonic scale approach in B-flat major (two flats). The exercise is written in 4/4 time and consists of two staves. The first staff contains the first four measures, and the second staff contains the next four measures. The notes are: B-flat, C, D, E-flat, F, G, A, B-flat.

5317

Exercise 5317: A 4-chord diatonic scale approach in B-flat major (two flats). The exercise is written in 4/4 time and consists of two staves. The first staff contains the first four measures, and the second staff contains the next four measures. The notes are: B-flat, C, D, E-flat, F, G, A, B-flat.

5371

Exercise 5371: A 4-chord diatonic scale approach in B-flat major (two flats). The exercise is written in 4/4 time and consists of two staves. The first staff contains the first four measures, and the second staff contains the next four measures. The notes are: B-flat, C, D, E-flat, F, G, A, B-flat.

5713

Exercise 5713: A 4-chord diatonic scale approach in B-flat major (two flats). The exercise is written in 4/4 time and consists of two staves. The first staff contains the first four measures, and the second staff contains the next four measures. The notes are: B-flat, C, D, E-flat, F, G, A, B-flat.

5731

Exercise 5731: A 4-chord diatonic scale approach in B-flat major (two flats). The exercise is written in 4/4 time and consists of two staves. The first staff contains the first four measures, and the second staff contains the next four measures. The notes are: B-flat, C, D, E-flat, F, G, A, B-flat.

5137

Two staves of musical notation for exercise 5137. The first staff contains measures 1-4, and the second staff contains measures 5-8. The key signature is two flats (Bb and Eb), and the time signature is 4/4. The melody consists of eighth and quarter notes.

5173

Two staves of musical notation for exercise 5173. The first staff contains measures 1-4, and the second staff contains measures 5-8. The key signature is two flats (Bb and Eb), and the time signature is 4/4. The melody consists of eighth and quarter notes.

5317

Two staves of musical notation for exercise 5317. The first staff contains measures 1-4, and the second staff contains measures 5-8. The key signature is two flats (Bb and Eb), and the time signature is 4/4. The melody consists of eighth and quarter notes.

5371

Two staves of musical notation for exercise 5371. The first staff contains measures 1-4, and the second staff contains measures 5-8. The key signature is two flats (Bb and Eb), and the time signature is 4/4. The melody consists of eighth and quarter notes.

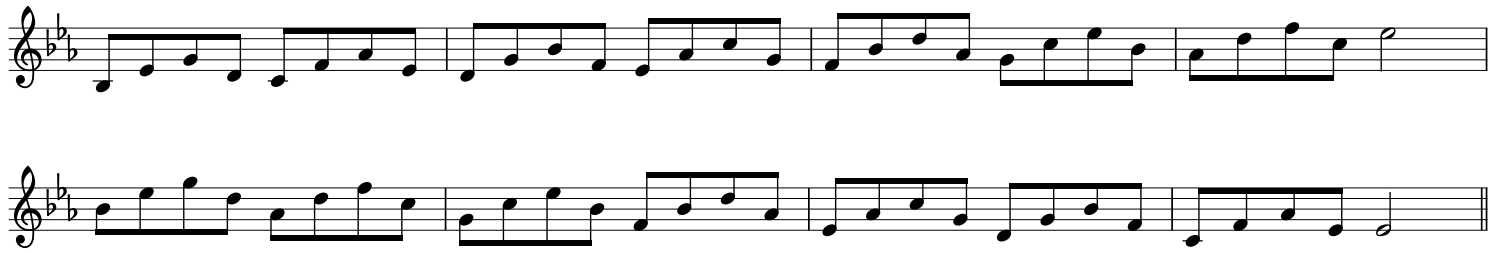
5713

Two staves of musical notation for exercise 5713. The first staff contains measures 1-4, and the second staff contains measures 5-8. The key signature is two flats (Bb and Eb), and the time signature is 4/4. The melody consists of eighth and quarter notes.

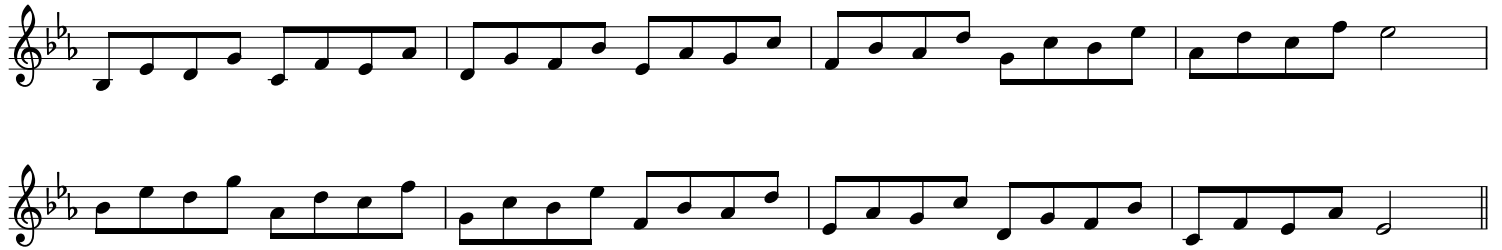
5731

Two staves of musical notation for exercise 5731. The first staff contains measures 1-4, and the second staff contains measures 5-8. The key signature is two flats (Bb and Eb), and the time signature is 4/4. The melody consists of eighth and quarter notes.

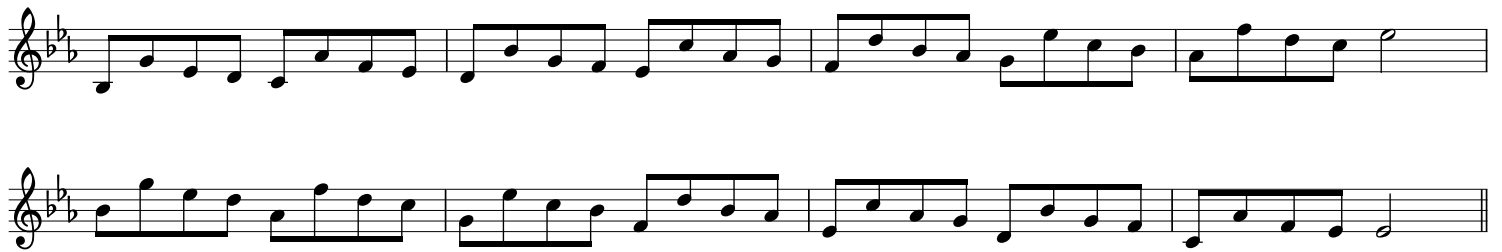
5137



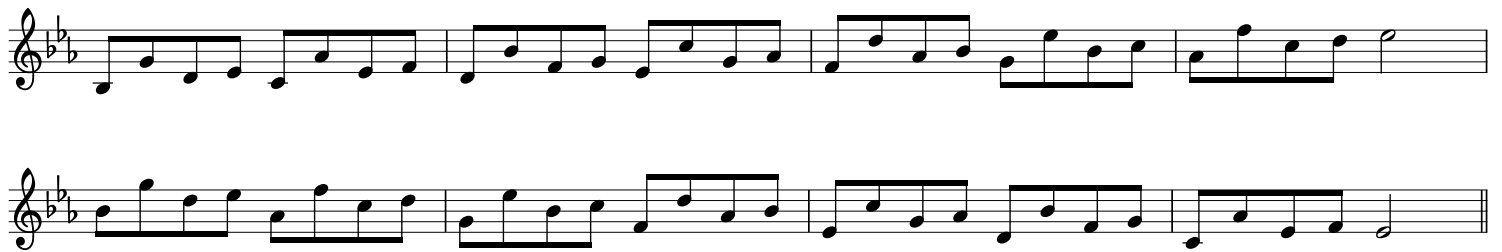
5173



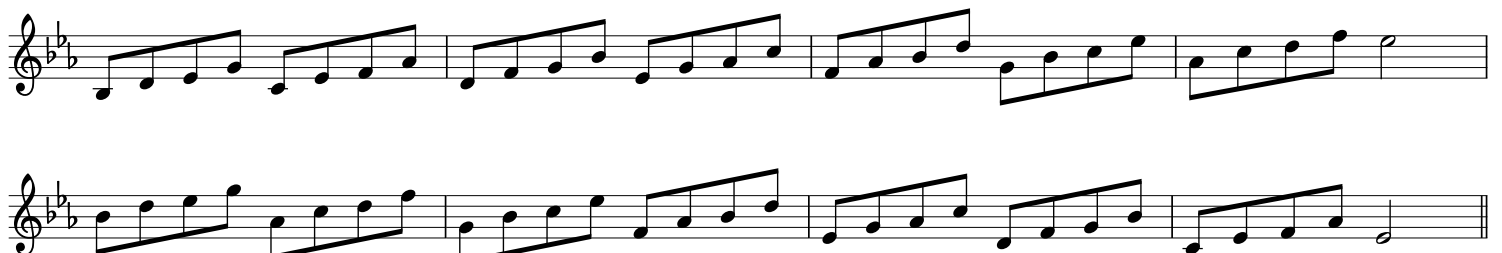
5317



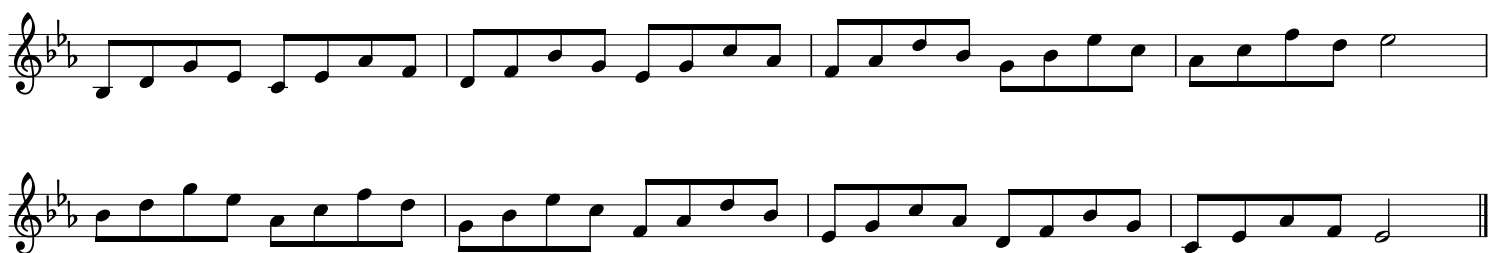
5371



5713



5731



5137

Two staves of musical notation for exercise 5137. The first staff contains four measures of music, and the second staff contains four measures. The key signature has two flats (B-flat and E-flat), and the time signature is 4/4. The melody consists of eighth and quarter notes.

5173

Two staves of musical notation for exercise 5173. The first staff contains four measures of music, and the second staff contains four measures. The key signature has two flats (B-flat and E-flat), and the time signature is 4/4. The melody consists of eighth and quarter notes.

5317

Two staves of musical notation for exercise 5317. The first staff contains four measures of music, and the second staff contains four measures. The key signature has two flats (B-flat and E-flat), and the time signature is 4/4. The melody consists of eighth and quarter notes.

5371

Two staves of musical notation for exercise 5371. The first staff contains four measures of music, and the second staff contains four measures. The key signature has two flats (B-flat and E-flat), and the time signature is 4/4. The melody consists of eighth and quarter notes.

5713

Two staves of musical notation for exercise 5713. The first staff contains four measures of music, and the second staff contains four measures. The key signature has two flats (B-flat and E-flat), and the time signature is 4/4. The melody consists of eighth and quarter notes.

5731

Two staves of musical notation for exercise 5731. The first staff contains four measures of music, and the second staff contains four measures. The key signature has two flats (B-flat and E-flat), and the time signature is 4/4. The melody consists of eighth and quarter notes.