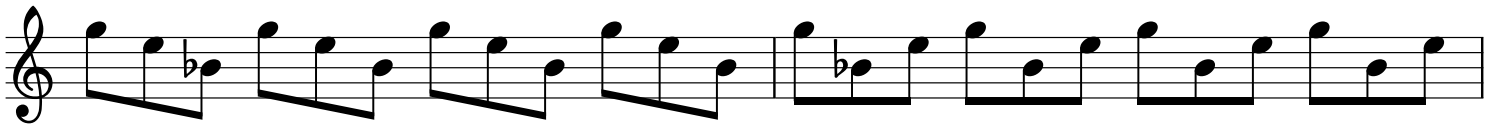
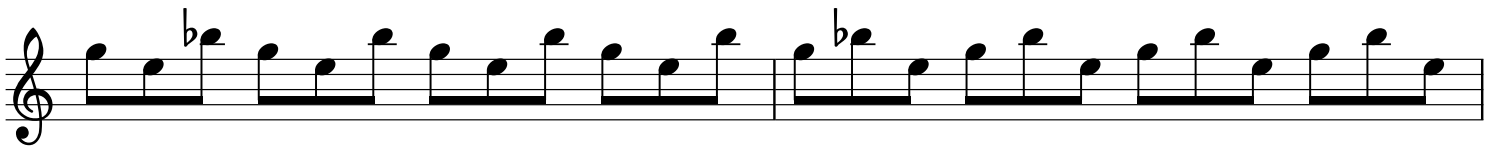
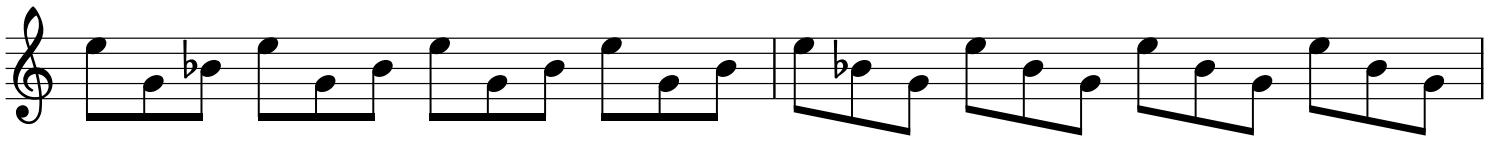


dim 3Chords



The image displays ten staves of musical notation for a jazz piece. The music is written in 4/4 time and features a key signature of one flat (B-flat). The notation is organized into two systems of five staves each. The first system (staves 1-5) begins with a treble clef, a 4/4 time signature, and a key signature of one flat. The melody consists of eighth and sixteenth notes, often beamed together in pairs. The second system (staves 6-10) continues the piece, ending with a double bar line. The notation includes various rhythmic patterns, such as eighth notes, sixteenth notes, and rests, creating a complex and rhythmic texture.