

3Chord Chromatic 4th table

531 (Basic + Basic)

[531-135]

① Chromatic

4th

[531-153]

② *Simile* ~



③ [531-315]

④ [531-351]



⑤ [531-513]

⑥ [531-531]



(Basic + Var.1)

① [531-135]

② [531-153]



③ [531-315]

④ [531-351]



⑤ [531-513]

⑥ [531-531]



(Basic+Var.2)

① [531-135]

② [531-153]



③ [531-315]

④ [531-351]



⑤ [531-513]

⑥ [531-531]



531 (Var.1 + Basic)

① *Chromatic* [135] 4th ② *Simile* ~ [153]

③ [315] ④ [351]

⑤ [513] ⑥ [531]

(Var.1 + Var.1)

① [135] ② [153]

③ [315] ④ [351]

⑤ [513] ⑥ [531]

(Var.1 + Var.2)

① [135] ② [153]

③ [315] ④ [351]

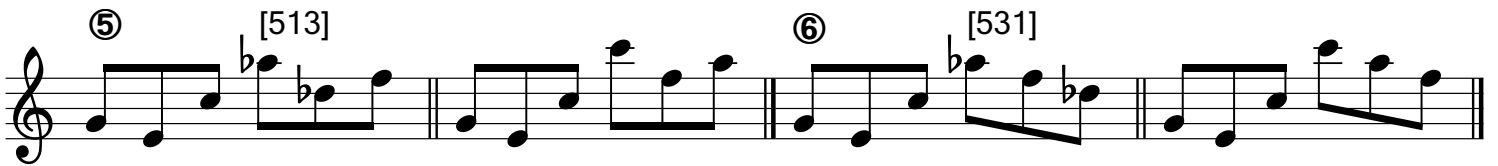
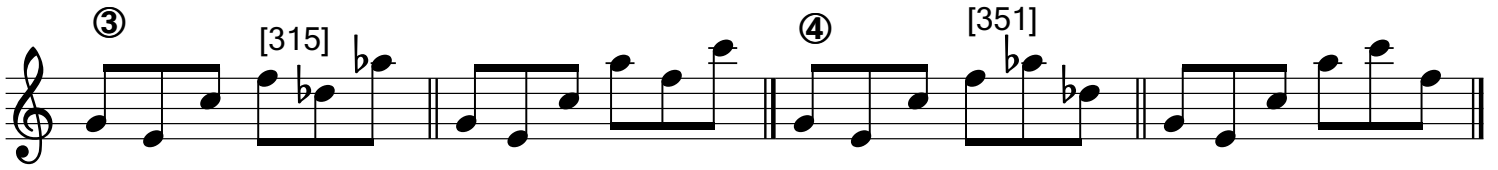
⑤ [513] ⑥ [531]

531 (Var.2 + Basic)

① *Chromatic* [135]

4th

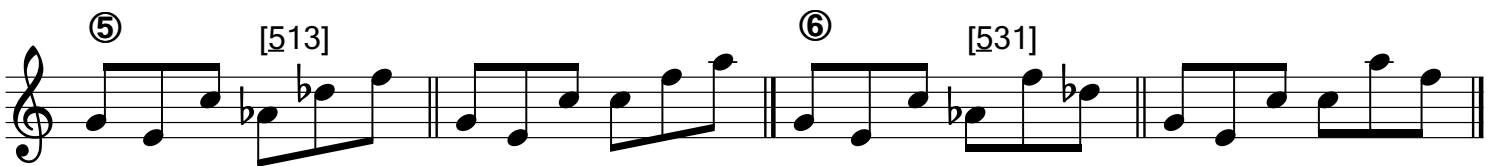
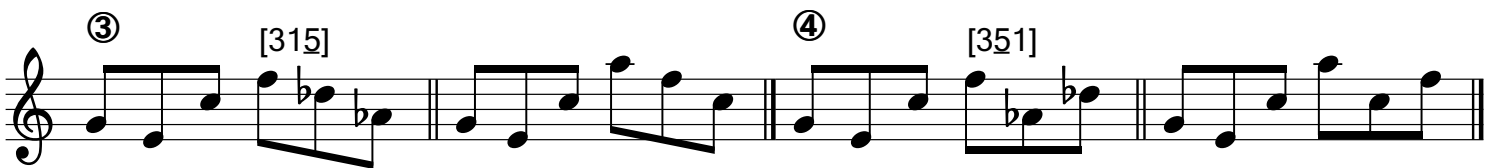
② *Simile* ~ [153]



(Var.2 + Var.1)

① [135]

② [153]



(Var.2 + Var.2)

① [135]

② [153]

