

3Chord Chromatic 4th table

153

(Basic + Basic)

① [153-135] *Chromatic* 4th ② [153-153] *Simile ~*

③ [153-315] ④ [153-351]

⑤ [153-513] ⑥ [153-531]

(Basic + Var.1)

① [153-135] ② [153-153]

③ [153-315] ④ [153-351]

⑤ [153-513] ⑥ [153-531]

(Basic+Var.2)

① [153-135] ② [153-153]

③ [153-315] ④ [153-351]

⑤ [153-513] ⑥ [153-531]

① [153] [135] *Chromatic* 4th ② [153] *Simile*~

(Var.1 + Var.1)

① [135] ② [153]

③ [315] ④ [351]

⑤ [513] ⑥ [531]

(Var.1 + Var.2)

① [135] ② [153]

③ [315] ④ [351]

⑤ [513] ⑥ [531]

(Var.2 + Basic)

① [135]

Chromatic

[135]

4th

②

Simile ~

[153]



③

[315]

④

[351]



⑤

[513]

⑥

[531]



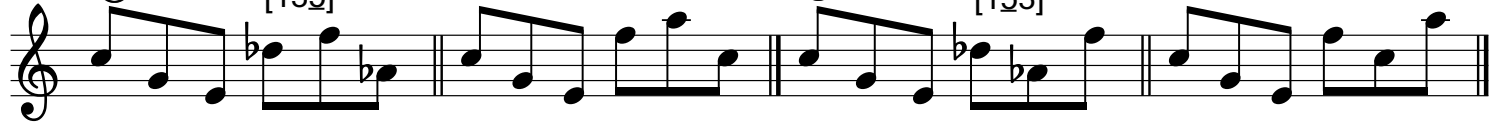
(Var.2 + Var.1)

①

[135]

②

[153]



③

[315]

④

[351]



⑤

[513]

⑥

[531]



(Var.2 + Var.2)

①

[135]

②

[153]



③

[315]

④

[351]



⑤

[513]

⑥

[531]

