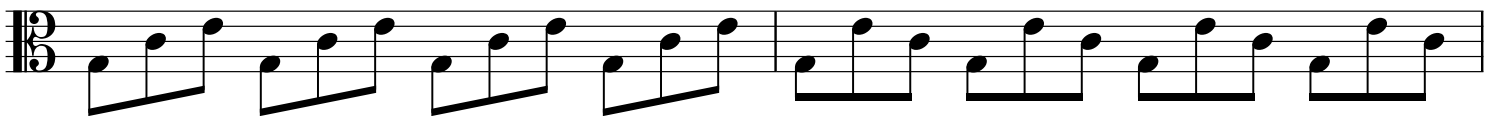
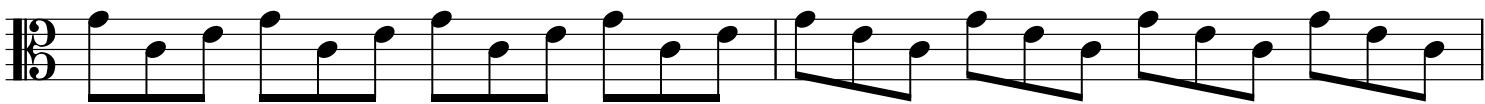
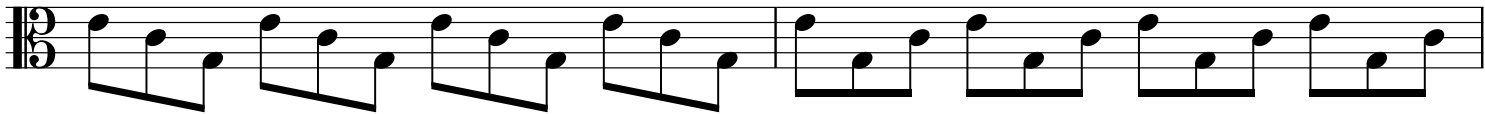


Major 3 Chords

C



The image displays ten staves of musical notation for a jazz piece. The music is written in 3/4 time, as indicated by the time signature at the beginning of the first staff. The notation consists of eighth and sixteenth notes, often beamed together, and rests. The first staff begins with a treble clef and a key signature of one flat (Bb). The subsequent staves use various clefs, including bass and alto clefs, to represent different instruments or voices. The piece concludes with a double bar line at the end of the tenth staff.