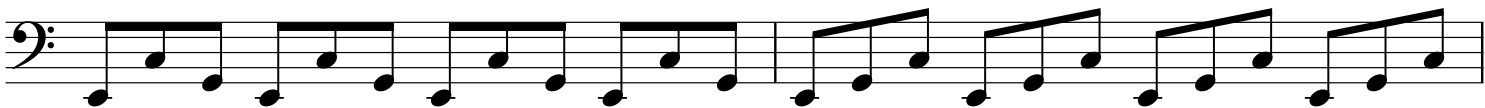


# Major 3 Chords

C



This image displays ten staves of musical notation for a bass line in 4/4 time. The notation is written in bass clef and features a variety of rhythmic patterns, including eighth and sixteenth notes, often beamed together. The first staff begins with a treble clef and a 4/4 time signature. The music consists of ten measures across the ten staves, with some measures containing complex rhythmic figures and others being simpler. The notation is clean and professional, suitable for a music book or sheet music.