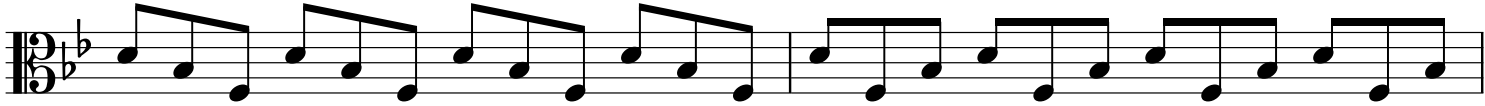


Major 3 Chords



The image displays ten staves of musical notation for a jazz piece. The music is written in a 4/4 time signature with a key signature of one flat (B-flat). The notation is organized into two systems of five staves each. The first system (staves 1-5) features a complex rhythmic pattern in the first staff, primarily consisting of eighth and sixteenth notes. The second staff of the first system has a simpler, more rhythmic pattern. The third staff of the first system continues with a similar pattern to the second staff. The fourth and fifth staves of the first system show a more intricate pattern with many beamed notes. The second system (staves 6-10) follows a similar structure, with the sixth staff having a complex pattern, the seventh staff being simpler, and the eighth and ninth staves continuing the complex pattern. The tenth staff concludes the piece with a final cadence.