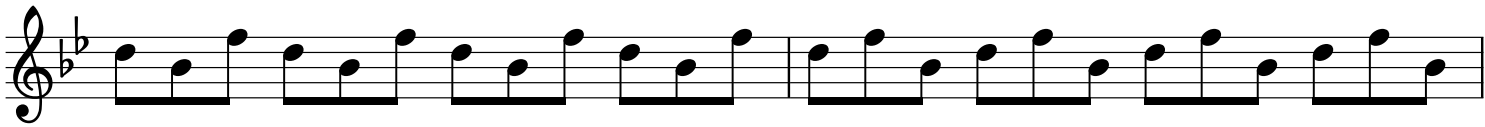


Major 3 Chords



The image displays ten staves of musical notation for a jazz piece. The music is written in a key signature of two flats (Bb and Eb) and a 4/4 time signature. The notation is organized into two systems of five staves each. The first system (staves 1-5) features a melodic line in the first staff, a bass line in the second staff, and a rhythmic accompaniment in the third staff. The second system (staves 6-10) continues this structure, with the first staff of the system providing a melodic line, the second staff a bass line, and the third staff a rhythmic accompaniment. The final staff of the second system concludes with a double bar line. The notation includes various rhythmic patterns, such as eighth and sixteenth notes, and rests.